



## TOWNHOUSE 4 BEDROOMS 3 BATHROOMS IN MANILVA

📍 Manilva

REF# R5166427 €495,000

BEDS

4

BATHS

3

BUILT

234 m<sup>2</sup>

TERRACE

100 m<sup>2</sup>

Huge Sea View Townhouse!

Can you get 4 bedrooms, panoramic sea views, be close to Sotogrande, and pay under €500,000? Yes!

This 4 Bedroom (including basement) townhouse, offers something special – scale, volume, finish, views.

With over 230m<sup>2</sup> built and approx 100m<sup>2</sup> of outside space, you can have the joy of big living in a proper house. It's also safe and secure should you wish to lock up and leave as a holiday home. Great rental potential too!

The community offers a huge pool, and a wonderful group of neighbours (we know, we have sold to a few), and what is more its a property that can sleep 8+ and entertain with a beautiful roof top solarium.

With pure south orientation and being able to see 3 countries in 1 view (UK/Gib, Spain, and Morocco), its

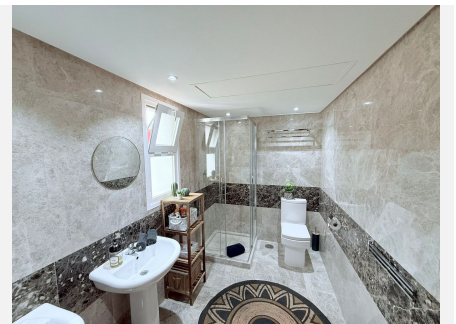
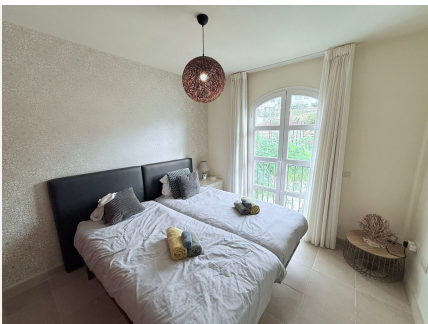
# BROMLEY ESTATES

## *Marbella*

rather unique.

10 minutes drive to great restaurants and beaches, 15 mins drive to Sotogrande International School and all the golf courses, whats not to like?

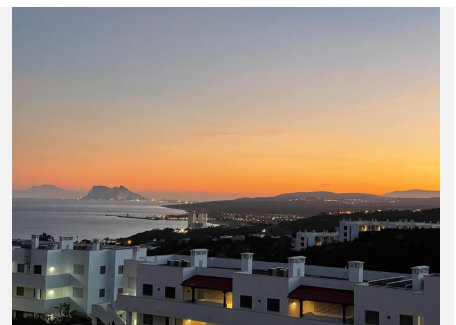
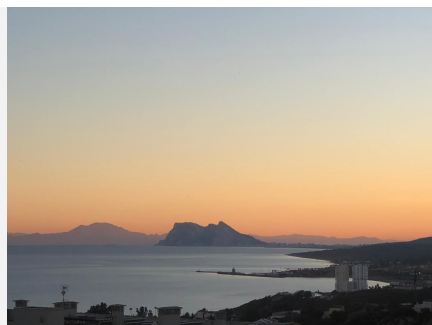
The views are incredible so viewings are highly recommended!





# BROMLEY ESTATES

*Marbella*



# BROMLEY ESTATES

## *Marbella*

---

