



## GROUND FLOOR APARTMENT 3 BEDROOMS 3 BATHROOMS IN ESTEPONA

📍 Estepona

REF# R5173753 €730,000

BEDS	BATHS	BUILT	PLOT	TERRACE
3	3	112 m²	50 m²	10 m²

### Dream Groundfloor Apartment in Benatalaya

Discover true peace and elegance with this stunning ground-floor apartment in the prestigious Benatalaya complex. Bright, spacious, and beautifully furnished (furniture inclusive!), it offers an inviting open-plan living and dining area with direct access to your private terrace and garden, a perfect spot to relax, entertain, or simply enjoy the tranquility. This home features three en-suite bedrooms, a fully equipped modern kitchen with laundry area, plus the convenience of two parking spaces and a large storage room. And yes, it comes furnished, ready for you to move in. Life at Benatalaya is all about wellness and comfort. Residents enjoy 5 swimming pools (including 1 indoor heated pool), a fully equipped gym, spa, sauna, and lush tropical gardens. It's so peaceful here, you'll hear nothing but nature. For golf lovers, this property offers something truly unique: direct access to Atalaya Golf, and with your purchase, you'll even become a shareholder of the Atalaya Golf & Country Club. Practicality meets investment security: the community has already approved the Tourist Licence, giving you the flexibility of high rental potential alongside the perfect holiday or



# BROMLEY ESTATES

*Marbella*

permanent home. Located just minutes from Puerto Banús, Marbella, and Estepona, and surrounded by international schools and world-class golf courses, this property is a rare opportunity to combine lifestyle, luxury, and smart investment.

Basic features:

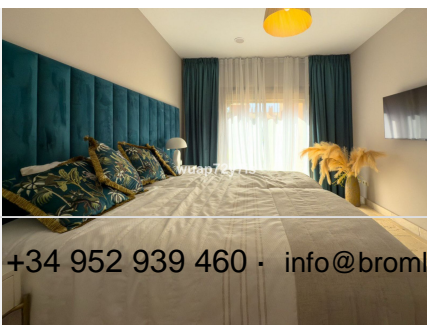
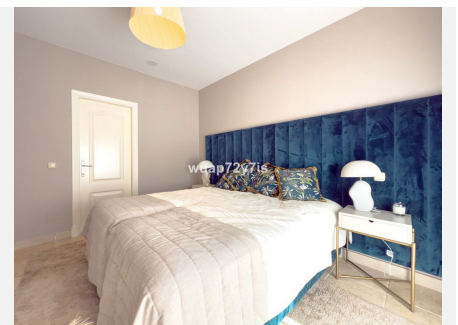
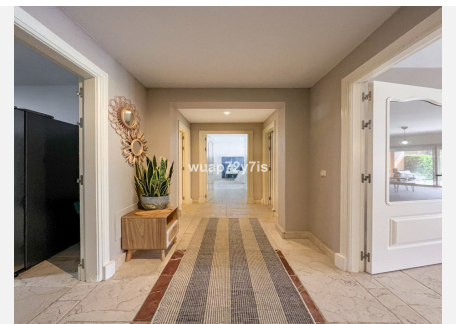
183 m² built

112 m² usable space

3 bedrooms, all en-suite

Furniture included

2 parking spots + large storage room



+34 952 939 460 · [info@bromleyestatesmarbella.com](mailto:info@bromleyestatesmarbella.com) Urbanizacion El Rosario, CN340, Km 188, Marbella, Malaga 29603



# BROMLEY ESTATES

## *Marbella*

