



GROUND FLOOR APARTMENT 2 BEDROOMS 2 BATHROOMS IN CABOPINO

📍 Cabopino

REF# R5181385 €590,000

BEDS

2

BATHS

2

BUILT

102 m²

PLOT

37 m²

TERRACE

15 m²

Ground Floor · La Montesa de Marbella (Cabopino)

A bright and elegant garden apartment in La Montesa de Marbella, where modern architecture meets the laid-back lifestyle of Cabopino.

The open-plan living and dining room opens completely through floor-to-ceiling glass doors, creating a seamless connection with the spacious terrace, covered porch and private garden. The design gives you the feeling of living in a villa while enjoying all the convenience of a luxury apartment.

Inside, both bathrooms are finished to a high standard with underfloor heating, while the kitchen comes fully fitted with top-quality appliances. The apartment is full of thoughtful details: electric blinds, premium wood and stone finishes, and carefully chosen wall materials that enhance both comfort and acoustics. A separate utility room adds extra practicality.

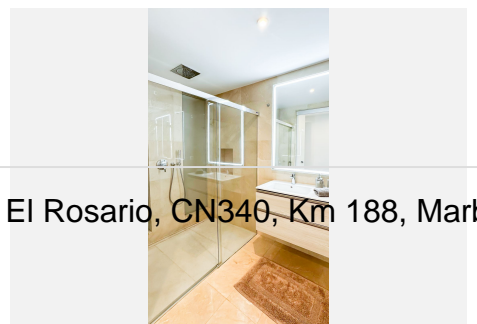
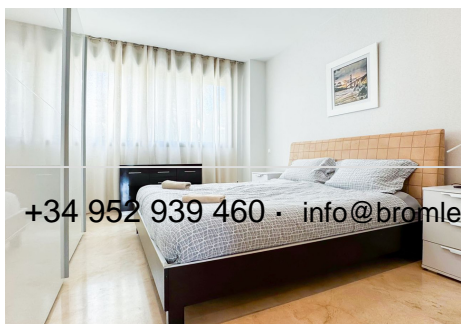
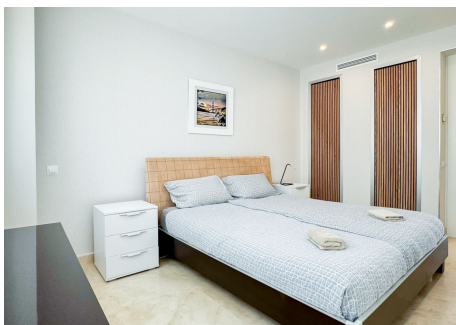
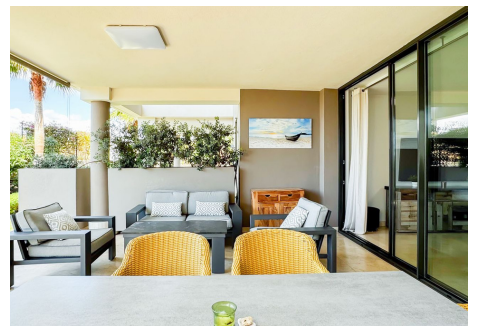
+34 952 939 460 · info@bromleyestatesmarbella.com Urbanizacion El Rosario, CN340, Km 188, Marbella, Malaga 29603

BROMLEY ESTATES

Marbella

Features

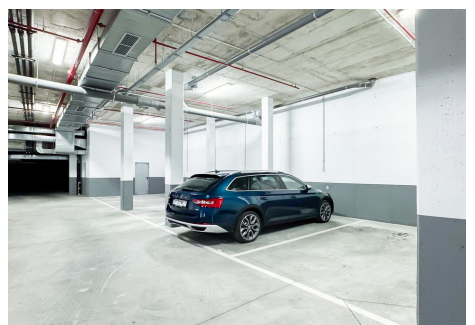
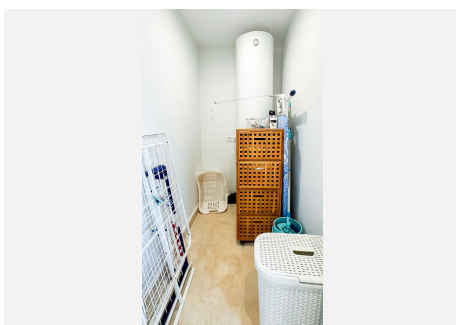
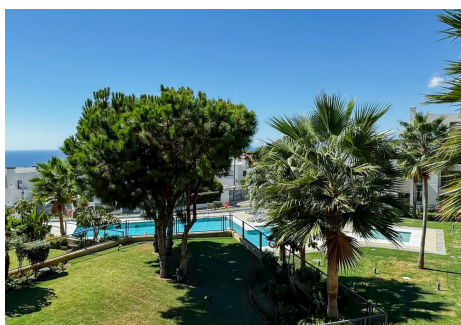
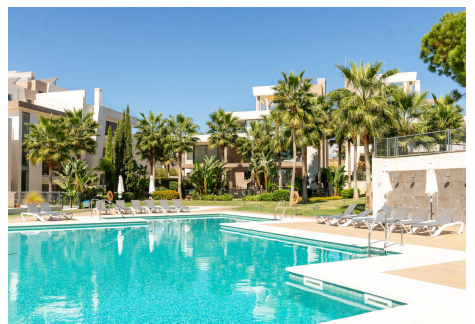
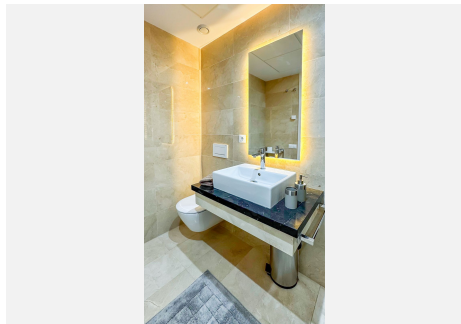
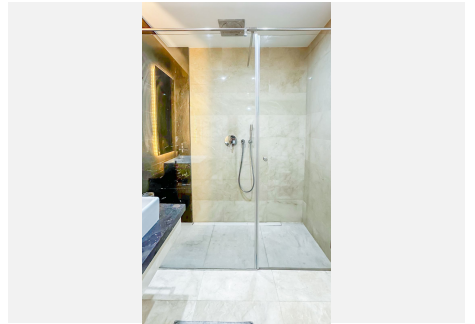
- 2 bedrooms · 2 bathrooms
- Private garden, terrace and covered porch
- Floor-to-ceiling sliding windows opening fully to the outdoor space
- High-end kitchen appliances and luxury finishes
- Underfloor heating in both bathrooms
- Utility/laundry room · Electric blinds
- Underground parking space and private storage room
- Secure gated community with 24-hour security, alarm system and CCTV
- Beautiful landscaped gardens and a large communal pool
- Excellent location within walking distance of Cabopino marina, beaches and golf



+34 952 939 460 · info@bromleyestatesmarbella.com · Urbanizacion El Rosario, CN340, Km 188, Marbella, Malaga 29603

BROMLEY ESTATES

Marbella



BROMLEY ESTATES

Marbella

