



HOUSE 3 BEDROOMS 4 BATHROOMS IN MANILVA

📍 Manilva

REF# R5185072 €1,495,000

BEDS

3

BATHS

4

BUILT

346 m²

PLOT

949 m²

TERRACE

122 m²

Magical Home in Punta Chullera!

Welcome to an extraordinary home in the sought-after area of Punta Chullera – known for its peaceful atmosphere and some of the very best views on the Costa del Sol.

The house features three bedrooms but also offers exceptionally spacious living areas, with the possibility to create additional bedrooms if desired. The view is truly spectacular – from all bedrooms and social areas you are greeted by a sweeping sea view that is arguably one of the best along the entire coast. The location is close to the beach, just a few minutes' walk from one of the Costa del Sol's most beautiful beaches. The open-plan layout creates a bright and airy feel, and every room has direct access to its own terrace. The generous terraces, the mature and private garden, and the private pool make this home perfect for both relaxation and social gatherings.

A double garage with direct street access provides convenient parking, and there is ample storage space throughout the house. The property is located in a secure and well-maintained gated community, only five

+34 952 939 460 · info@bromleyestatesmarbella.com Urbanizacion El Rosario, CN340, Km 188, Marbella, Malaga 29603

BROMLEY ESTATES

Marbella

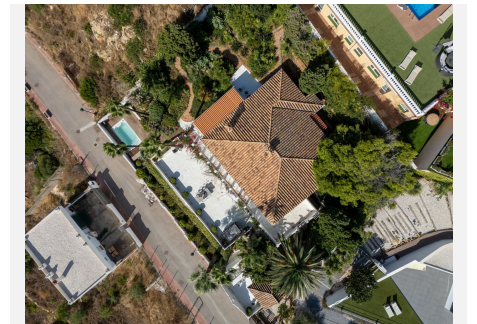
minutes from Sotogrande and La Duquesa, and two minutes from the charming Torre de la Sal.

This is a unique home where sea, light, and harmony come together – a place to truly enjoy all year round.

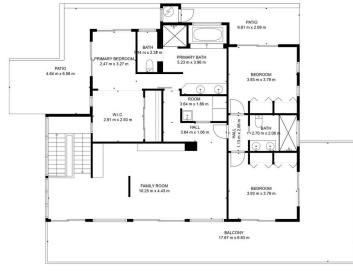


BROMLEY ESTATES

Marbella



BROMLEY ESTATES
Marbella



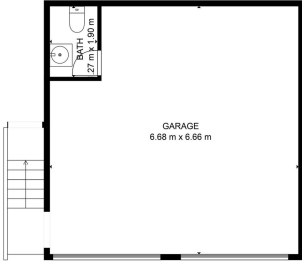
BELOW GROUND: 0 sq. ft.; FLOOR 2: 129 sq. ft.; FLOOR 3: 139 sq. ft.
 EXCLUDED AREAS: GARAGE: 42 sq. ft.; HALF BATH: 2 sq. ft.; PATIO: 77 sq. ft.
 DECK: 33 sq. ft.; PORCH: 163 sq. ft.; BALCONY: 55 sq. ft.
 UNFINISHED: 3 sq. ft.; WALLS: 22 sq. ft.

*FLOOR PLAN CREATED BY CAROLAN AND MEASUREMENTS DEERED FROM RELIABLE BUT NOT GUARANTEED.



TOTAL: 260 sq ft
 BELOW GROUND: 0 sq ft, FLOOR 2: 120 sq ft, FLOOR 3: 130 sq ft
 EXCLUDED AREAS: GARAGE: 42 sq ft, HALF BATH: 1 sq ft, PATIO: 77 sq ft,
 DECK: 33 sq ft, PORCH: 105 sq ft, BALCONY: 95 sq ft,
 UNDEVELOPED: 1 sq ft, WALLS: 22 sq ft

FOOT PADS CRAFTED BY COLUMBIA ARE MEASUREMENTS DERIVED FROM RECORDS BUT NOT GUARANTEED.



TOTAL: 267 sq2
 BELOW GROUND: 0 sq2, FLOOR 2: 120 sq2, FLOOR 3: 139 sq2
 EXCLUDED AREAS: GARAGE: 42 sq2, HALL F607H: 2 sq2, F607D: 77 sq2,
 DECK: 33 sq2, PORCH: 163 sq2, BALCONY: 55 sq2,
 UNDEFINED: 1 sq2, WALLS: 22 sq2

FLOOR PLAN CREATED BY COMBINE AIR MEASUREMENTS DEEMED REASONABLY RELIABLE BUT NOT GUARANTEED.