



MIDDLE FLOOR APARTMENT 2 BEDROOMS 2 BATHROOMS IN ESTEPONA

📍 Estepona

REF# R5187808 €1,466,000

BEDS

2

BATHS

2

BUILT

149 m²

TERRACE

42 m²

For those looking to live in the Costa del Sol, Velaya is the perfect place. The development benefits from an unparalleled beachfront location and enjoys, among others, a wide cultural, gastronomic, and sports offering.

This is a perfect apartment by the sea, consisting of 2 bedrooms and 2 bathrooms, an open kitchen with an island, and a salon from where you can enjoy a magnificent view of the Mediterranean Sea. The sitting area and the master bedroom are connected to the 40m2 covered terrace. The apartment is located on the 1 floor, south facing. There is an underground garage and store room.

This beautiful apartment is fully furnished with the luxury and highest quality furniture.

The urbanization has been developed to meet all needs and for you to enjoy a beach-chic lifestyle, luxuriating in nature's bounty, and finding the peace, and relaxation you are looking for. Apart from the

BROMLEY ESTATES

Marbella

extra-sized heated swimming pool, you can enjoy a tennis/paddle court, outdoor BBQ, Jacuzzi, kids pool, gym pavilion, and kids play area. There are security systems and a concierge.

The residential offering stands out for the quality of its materials, exclusivity, architectural features, and enviable beachfront location.

In front of the urbanization, there is a new promenade and a few very nice beach clubs to spend your relaxing time there.

Extra Description

°security

°kids pool

°jacuzzi

°outdoor kitchen BBQ pavilion

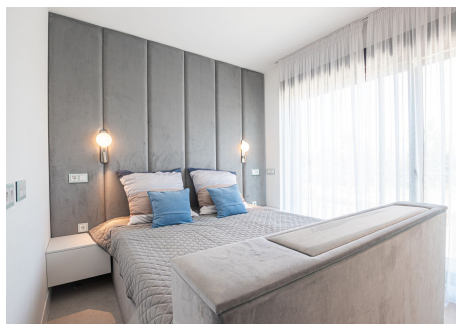
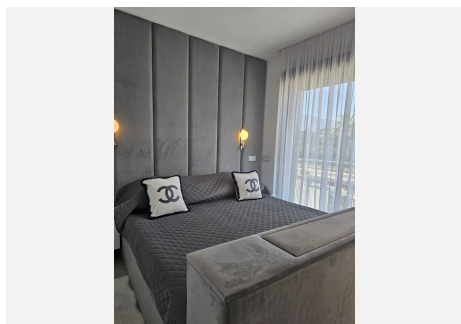
°tennis court

°paddle court

°gym pavilion

°kids play area

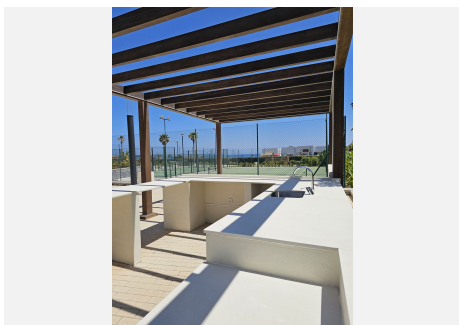
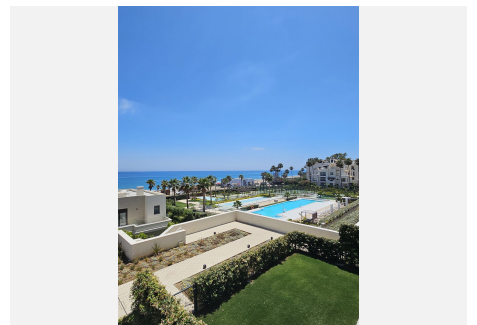
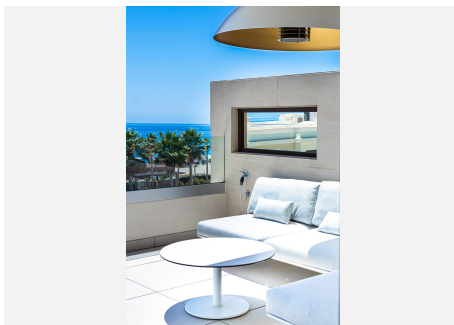
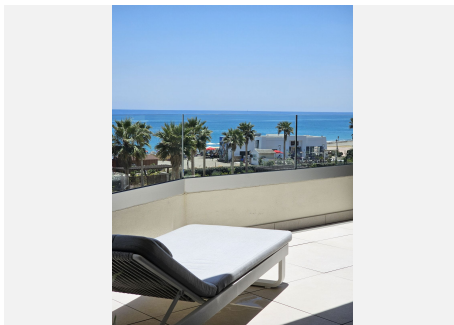
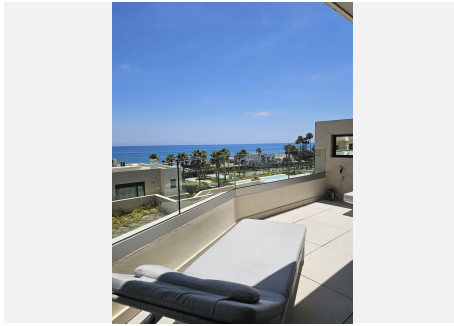
The project that aims to obtain the BREEAM® International Certificate



+34 952 939 460 • info@bromleyestatesmarbella.com Urbanizacion El Rosario, CN340, Km 188, Marbella, Malaga 29603

BROMLEY ESTATES

Marbella



BROMLEY ESTATES

Marbella

