



GROUND FLOOR APARTMENT 2 BEDROOMS 2 BATHROOMS IN LOS ARQUEROS

📍 Los Arqueros

REF# R5191708 €485,000

BEDS

2

BATHS

2

BUILT

100 m²

TERRACE

29 m²

Ground Floor Corner Apartment | Los Arqueros Golf Resort, Benahavís

We're delighted to present this exceptional ground-floor corner apartment in the renowned Los Arqueros Golf & Country Club, Benahavís. This extra-large, light-filled property comes completely key-ready for immediate occupancy.

Property Highlights

Upon entering, you'll find an expansive beautifully presented open-concept living and dining room featuring a large corner sofa, dining space for six, and an attractive feature fireplace. Two sets of double doors provide direct access to a private south-facing covered terrace—ideal for al fresco dining and outdoor entertaining—plus a generous corner garden offering extended outdoor living space.

The property includes two spacious double bedrooms. The master suite features an ensuite bathroom with bathtub and direct garden access, while a second full bathroom serves the additional bedroom and guests.

+34 952 939 460 · info@bromleyestatesmarbella.com Urbanizacion El Rosario, CN340, Km 188, Marbella, Malaga 29603

BROMLEY ESTATES

Marbella

Ample built-in wardrobe space throughout ensures excellent storage .

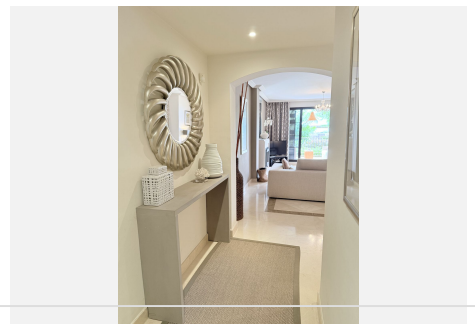
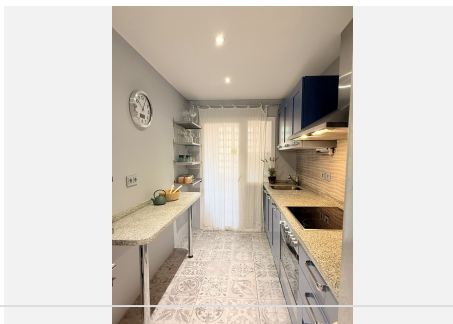
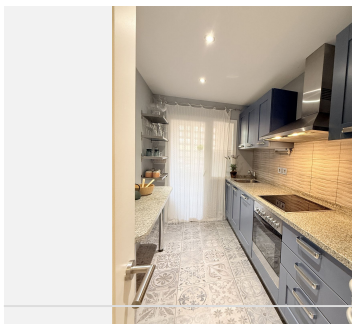
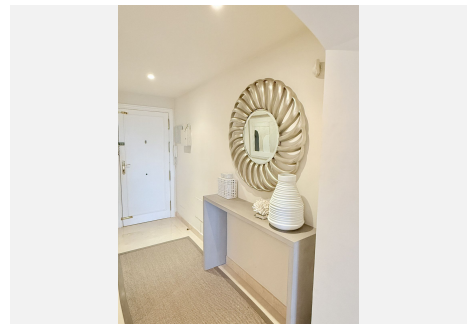
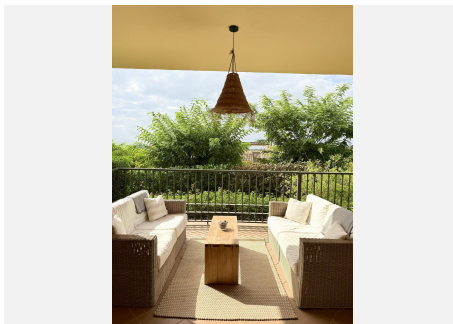
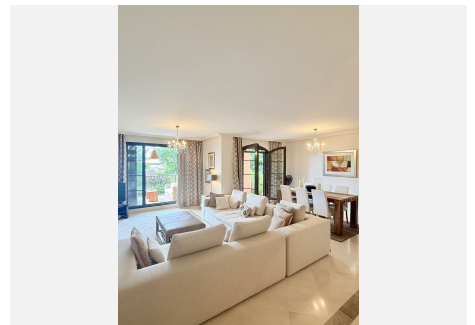
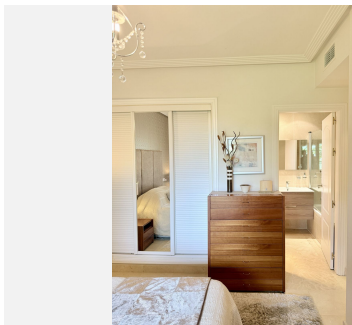
The beautiful galley-style kitchen showcases blue shaker cabinetry and decorative tiled flooring, complemented by a separate laundry room and additional storage areas. One designated parking space is included.

Resort Amenities & Location

Residents enjoy access to extensively landscaped communal gardens and a large swimming pool. The development sits just a two-minute walk from the Los Arqueros Golf Clubhouse, offering fine dining, all-day café service, bowling alley with restaurant, state-of-the-art gymnasium, tennis courts, and an 18-hole championship golf course designed by Seve Ballesteros.

The location provides breathtaking mountain and golf course views, with Benhavis village, San Pedro and Puerto Banús both less than 10 minutes' drive away. This combination of resort-style living, premium golf facilities, and convenient coastal access makes this an outstanding opportunity.

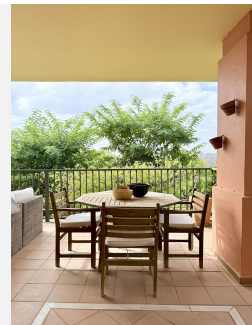
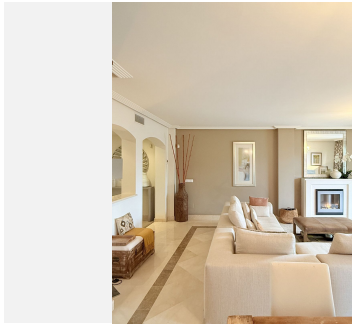
Contact us today to arrange your private viewing



+34 952 939 460 · info@bromleyestatesmarbella.com Urbanizacion El Rosario, CN340, Km 188, Marbella, Malaga 29603

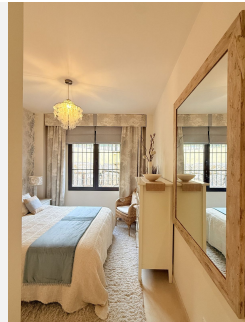
BROMLEY ESTATES

Marbella



BROMLEY ESTATES

Marbella



BROMLEY ESTATES

Marbella

