



## PENTHOUSE DUPLEX 2 BEDROOMS 2 BATHROOMS IN LA CALA DE MIJAS

📍 La Cala de Mijas

REF# R5199397 €357,000

BEDS

2

BATHS

2

BUILT

156 m<sup>2</sup>

TERRACE

71 m<sup>2</sup>

Charming Penthouse with Open Views and Large Solarium in La Cala de Mijas

Just a few minutes from the town and beaches of La Cala de Mijas, this beautiful duplex penthouse offers light, space, and excellent privacy in a safe and well-maintained environment.

? Main Features

Property:

2 spacious bedrooms and 2 bathrooms en suite

Living room with fireplace and access to 2 terraces (south and west) with awnings for year-round enjoyment

Equipped kitchen, semi-open and very bright

Underfloor heating in bathrooms and living room

Electric blinds, double glazing, and air conditioning with individual room control

Built-in wardrobes and additional storage space

+34 952 939 460 · info@bromleyestatesmarbella.com Urbanizacion El Rosario, CN340, Km 188, Marbella, Malaga 29603

# BROMLEY ESTATES

*Marbella*

## Exterior & Views:

Large private solarium of 71 m<sup>2</sup> on the upper floor, with jacuzzi, covered and open areas  
Open views of the landscape and a glimpse of the sea  
Private garage and storage room included

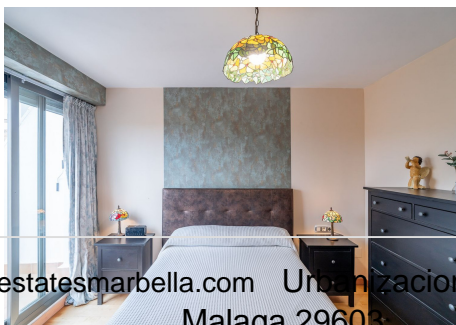
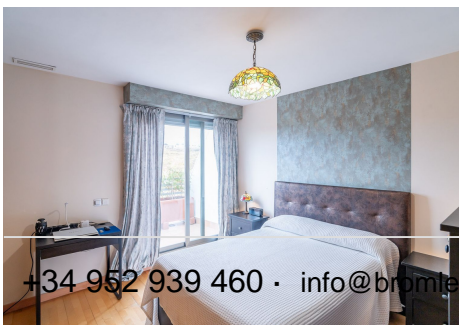
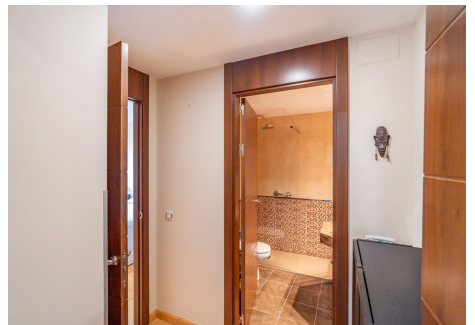
## Community & Services:

Gated community with concierge and 24-hour security  
Three pools, each with children's and adult areas, surrounded by tropical gardens  
Building with elevator

An elegant, bright, and very private property, ideal for enjoying the authentic Mediterranean lifestyle all year round.

Contact us for more information

According to Decree 218/2005 of October 11, which regulates consumer information in the sale and rental of housing in Andalusia, notary, registry, I.T.P., financial, or other costs related to the purchase are not included in the price. Information provided is indicative, not binding, and has no contractual value.





# BROMLEY ESTATES

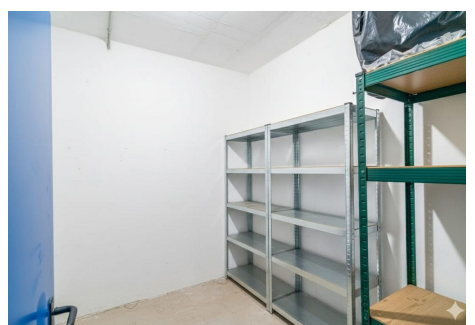
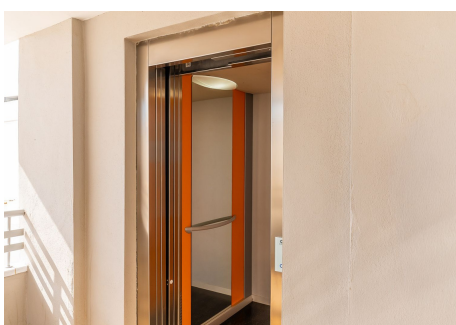
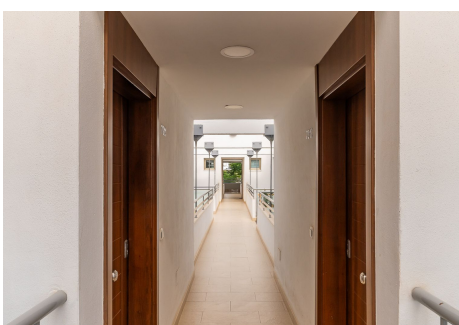
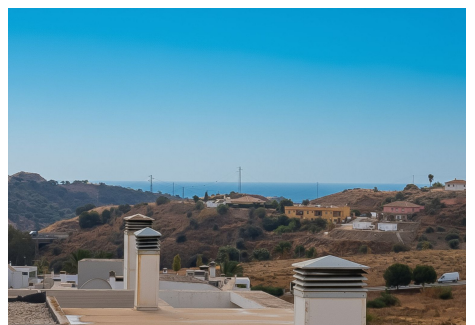
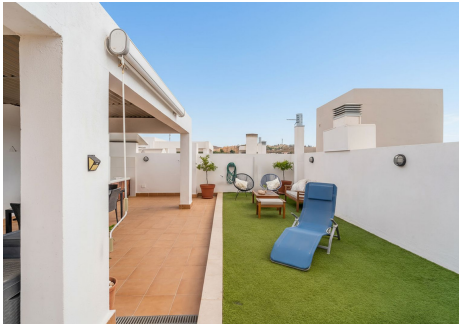
## *Marbella*





# BROMLEY ESTATES

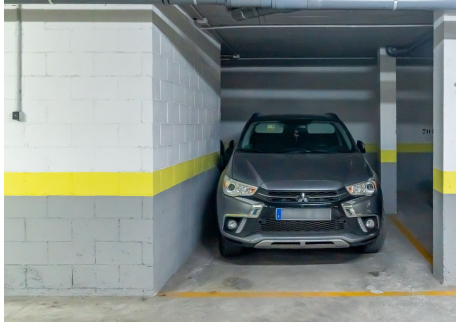
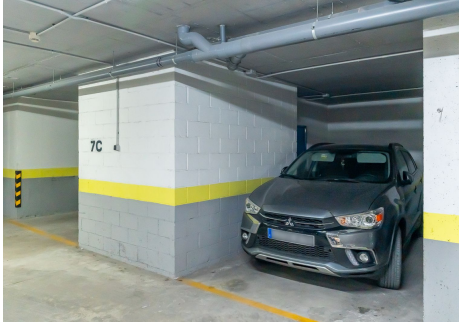
*Marbella*





# BROMLEY ESTATES

*Marbella*





# BROMLEY ESTATES

*Marbella*

