



HOUSE 10 BEDROOMS 13 BATHROOMS IN MIJAS

📍 Mijas

REF# R5203087 €1,400,000

BEDS

10

BATHS

13

BUILT

560 m²

PLOT

800 m²

TERRACE

203 m²

Unique Detached Villa with Stunning Views in Riviera del Sol – Ideal Investment Opportunity

This exceptional detached villa is located in the sought-after area of Riviera del Sol, just minutes from the beach, golf courses, shops, and restaurants. Set on a plot of 800 m² with 500 m² built, the property offers breathtaking panoramic views, a private swimming pool, lush garden, and private on-site parking.

A standout feature of this villa is its division into 7 self-contained apartments, each with independent access, kitchen, and bathroom—making it a highly attractive investment for holiday rentals or long-term lets.

Layout includes:

2 studios (30 m² each)

1 large penthouse (160 m²) with 3 bedrooms and 3 bathrooms

BROMLEY ESTATES

Marbella

2 apartments with 2 bedrooms and 2 bathrooms (85 m² each)

1 ground-floor apartment with 1 bedroom (65 m²)

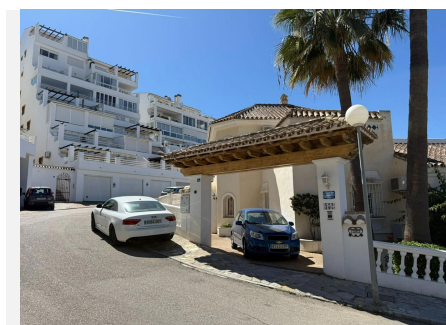
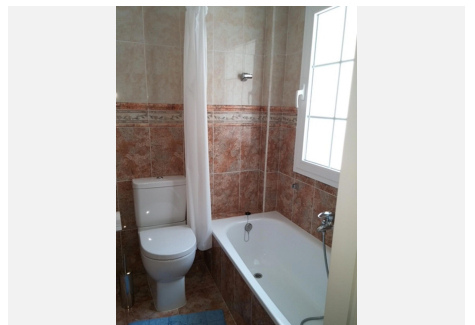
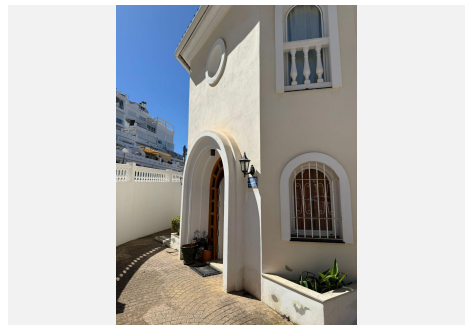
1 unfinished unit (shell state – 120 m²) ideal for creating 1–2 extra apartments

The shared outdoor spaces include terraces and garden areas with open views. There is also potential to build a communal pool (subject to approval), and on-site parking for multiple vehicles.

The property allows flexible management—perfect for platforms like Airbnb, Booking, or long-term leases. Smaller units offer high turnover and low maintenance, while the penthouse can generate premium rental income from families or groups. Completing the unfinished area adds future scalability and profit.

Whether you're looking for a profitable rental business or a multi-unit family home with income potential, this villa is a rare and versatile opportunity.

Contact us today for more information or to arrange a viewing!



+34 952 939 460 · info@bromleyestatesmarbella.com Urbanizacion El Rosario, CN340, Km 188, Marbella, Malaga 29603

BROMLEY ESTATES

Marbella



BROMLEY ESTATES

Marbella

