



## MIDDLE FLOOR APARTMENT 2 BEDROOMS 2 BATHROOMS IN ELVIRIA

📍 Elviria

REF# R5216416 €420,000

BEDS

2

BATHS

2

BUILT

92 m²

Located in the Rancho Park residential complex in the Elviria-Cabopino area of Marbella, this first-floor apartment offers a peaceful and well-connected setting, ideal for both permanent residence and enjoying a second home on the Costa del Sol.

The property has a usable area of 71.29 m² and a constructed area of 92.47 m², plus two private terraces totaling 17.60 m², perfect for enjoying the sun and the Mediterranean climate year-round.

Its layout is comfortable and functional, with an entrance hall, a living-dining room with access to the terrace, a separate kitchen, two bedrooms, a full bathroom, and a guest toilet. The terraces provide spaciousness and natural light, creating ideal areas for relaxation and outdoor leisure.

The residential complex features landscaped communal areas and a well-maintained environment, with easy access to services, shops, and the main roads that quickly connect to the center of Marbella and its

# BROMLEY ESTATES

*Marbella*

beaches. An excellent opportunity for those seeking quality of life in one of the most valued areas of the Costa del Sol.

Middle Floor Apartment, Elviria, Costa del Sol.

2 Bedrooms, 2 Bathrooms, Built 92 m².

Setting : Close To Golf, Close To Shops, Close To Sea, Urbanisation.

Orientation : South.

Condition : Excellent, Good.

Pool : Communal.

Climate Control : Air Conditioning.

Views : Panoramic.

Features : Lift, Fitted Wardrobes, Private Terrace.

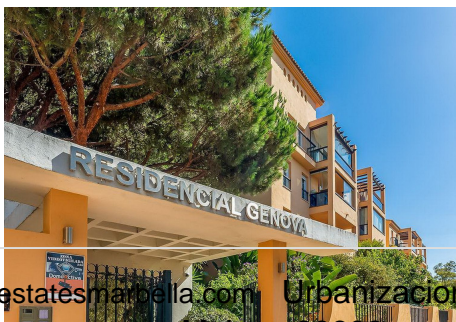
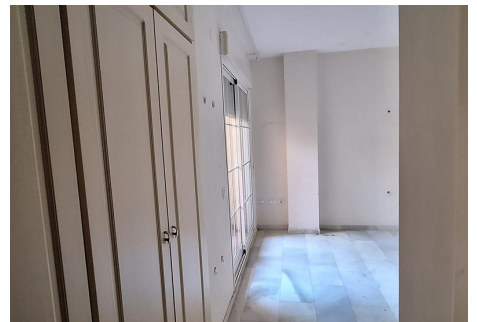
Kitchen : Partially Fitted.

Garden : Communal.

Security : Gated Complex, Entry Phone.

Utilities : Electricity, Drinkable Water, Telephone.

Category : Bargain, Beachfront, Cheap, Golf, Holiday Homes, Investment, Luxury, Resale.



+34 952 939 460 • [info@bromleyestatesmarbella.com](mailto:info@bromleyestatesmarbella.com) Urbanización El Rosario, CN340, Km 188, Marbella, Malaga 29603



# BROMLEY ESTATES

## *Marbella*

---

