



FRONTLINE GOLF VILLA FOR SALE IN LA RESINA GOLF, ESTEPONA WITH SPECTACULAR VIEWS

📍 Estepona

REF# BEMV1526 €1,450,000

BEDS	BATHS	BUILT	PLOT	TERRACE
5	4	308.46 m ²	521.21 m ²	95 m ²

Set within one of the most prestigious golf and country club environments in the area, this frontline golf villa for sale in La Resina Golf, Estepona with spectacular views presents a contemporary architectural composition, designed to support both family living and a strong connection to the surrounding landscape.

Glass is a defining feature of the villa, used to take full advantage of its position and to draw natural light into the living spaces. The property is sold fully and tastefully furnished, complementing its contemporary design and enhancing its immediate appeal. Accommodation includes five bedrooms and four bathrooms, arranged across multiple levels to provide both separation and flexibility. The principal suite incorporates a dressing area, a more generous bathroom and access to a private terrace. Additional bedrooms maintain a consistent finish, with large windows and doors that allow natural light to move freely throughout.

The exterior centres around a heated swimming pool, with terraces suited to both relaxation and entertaining. A fully equipped outdoor kitchen and barbecue introduce a more social setting. A rooftop

+34 952 939 460 · info@bromleyestatesmarbella.com Urbanizacion El Rosario, CN340, Km 188, Marbella, Malaga 29603

BROMLEY ESTATES

Marbella.

solarium features a jacuzzi, lounge areas and outdoor gym equipment positioned to capture the stunning views across the golf course and towards the mountains. The lower level is designed for entertainment, incorporating a cinema room, bar area and additional flexible spaces that can be adapted to suit different requirements. A private carport accommodates two vehicles, with integrated security and smart home features supporting both comfort and day-to-day functionality.

The area offers a relaxed residential atmosphere defined by low-density planning and open green spaces. La Resina's 9-hole course is recognised for its quality and design, offering a rewarding experience for both professionals and amateurs alike. Its position just minutes from the coastline places it within easy reach of beach clubs, dining, and everyday amenities, while remaining removed from the busier, more transient zones along the shore.

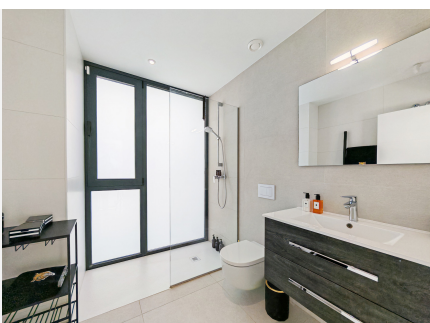
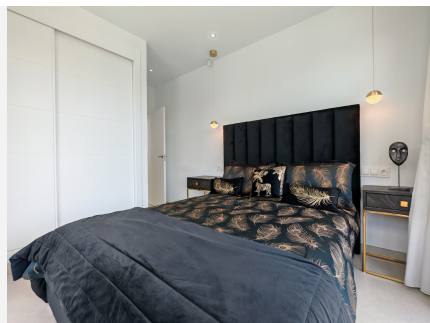
As part of the wider municipality of Estepona, the setting benefits from a town that has evolved with a clear emphasis on quality and long-term appeal. Estepona's centre retains its traditional character, with carefully maintained streets, independent boutiques and a strong local identity, while newer developments reflect a more contemporary, design-led approach. Its position allows for direct connections towards Marbella to the east and Sotogrande to the west, placing it within a well-connected stretch of the coastline.

This balance between authenticity and modern infrastructure has positioned the area as one of the more considered and steadily appreciating locations on the coast, appealing to those seeking both lifestyle and enduring value, a balance that is reflected in this villa.



BROMLEY ESTATES

Marbella



BROMLEY ESTATES

Marbella

