

BROMLEY ESTATES

Marbella



BEACHFRONT VILLA FOR SALE IN GUADALMINA BAJA, MARBELLA WITH DIRECT BEACH ACCESS

📍 Guadalmina Baja

REF# BEMV1541 €5,400,000

BEDS

4

BATHS

4

BUILT

306 m²

PLOT

1744 m²

Very few properties enjoy a position where the Mediterranean forms the boundary to the garden. This beachfront villa for sale in Guadalmina Baja, Marbella with direct beach access occupies one of the few remaining coastal settings of its kind on the Costa del Sol. Set within one of the area's most prestigious residential communities, it is a home defined as much by its extraordinary location as by the possibilities it presents.

The property is arranged across a single level, offering four bedrooms, four bathrooms and generously proportioned living spaces that open directly onto the gardens and private swimming pool. Mature landscaping provides privacy without diminishing the openness of the setting, while a solarium terrace enjoys panoramic views along the coastline. South-facing throughout, the home enjoys abundant natural light, creating bright, welcoming interiors that connect naturally with the outdoor spaces.

+34 952 939 460 · info@bromleyestatesmarbella.com Urbanizacion El Rosario, CN340, Km 188, Marbella, Malaga 29603

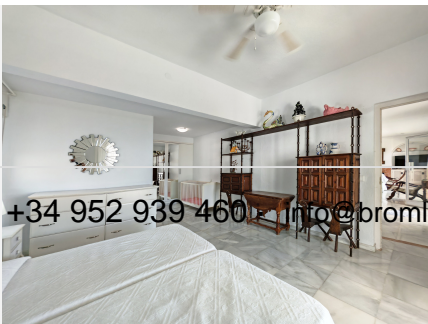
BROMLEY ESTATES

Marbella

What makes this property truly exceptional is the flexibility it offers. The existing villa provides an excellent foundation for a comprehensive renovation, allowing its established character to be enhanced with contemporary architecture and modern comforts. Alternatively, the plot presents the opportunity to create a new luxury residence of approximately 436 m², designed entirely around the next owner's vision.

Guadalmina Baja occupies a unique place within the Costa del Sol's luxury property market. Defined by expansive private estates, tree-lined avenues and an unspoilt stretch of coastline, it has preserved the space, privacy and understated character that have become increasingly difficult to find elsewhere. Despite its peaceful atmosphere, the vibrant centre of San Pedro de Alcántara is only minutes away, placing excellent restaurants, cafés, boutiques and everyday amenities within easy reach. Real Club de Golf Guadalmina, one of the Costa del Sol's oldest and most respected 36-hole golf clubs, is just moments away, together with tennis clubs, beachfront restaurants, international schools and the Guadalmina Commercial Centre. Puerto Banús can be reached in under five minutes, while Marbella town centre, Estepona, Sotogrande and Málaga Airport are all within comfortable driving distance, providing outstanding access to some of southern Spain's finest golf, marinas, fine dining and international connections.

Absolute beachfront opportunities of this calibre are exceptionally difficult to secure. Whether restoring the existing villa or creating an architectural statement from the ground up, this acquisition offers both immediate enjoyment and enduring long-term value, defined by one of Marbella's most prized stretches of Mediterranean coastline.



+34 952 939 460 > info@bromleyestatesmarbella.com Urbanizacion El Rosario, CN340, Km 128, Marbella, Malaga 29603

BROMLEY ESTATES

Marbella



BROMLEY ESTATES

Marbella

