



## FRONTLINE GOLF VILLA FOR SALE IN NUEVA ATALAYA, BENAHAIVIS

📍 Estepona

REF# BEMV1824 €1,850,000

BEDS

4

BATHS

4

BUILT

350.0 m<sup>2</sup>

PLOT

667.0 m<sup>2</sup>

TERRACE

40.0 m<sup>2</sup>

Villa for sale in Nueva Atalaya, Benahavis, with stunning panoramic views to the sea, golf and the mythical mountain of Marbella, La Concha. The house is located in a very quiet street, front line to Atalaya golf. The villa is very private and was recently renovated. It is in excellent condition and has been designed for easy maintenance. Heated swimming pool with salt water, nicely decorated outside terraces, to enjoy the fantastic panoramic views all day long. The house has 3 levels. On the ground floor is the entrance hall, guest toilet, spacious living room with fireplace with exit to a nice covered terrace, dining area with large windows and beautiful views to La Concha and the golf, separate fully fitted kitchen. Parking for 1-2 cars.

Garden with artificial grass for easy maintenance, large planters with plants that consume little water, covered terrace, with access to a glazed terrace on the first floor with panoramic golf and sea views, outdoor dining area, beautiful fountains with sculptures, BBQ area, heated salt swimming pool with sun lounge area, glass balustrade to enjoy the spectacular golf, sea and mountain views. On the first floor there are three bedrooms and 3 bathrooms. The master bedroom has a terrace with fantastic panoramic views. In the

+34 952 939 460 · [info@bromleyestatesmarbella.com](mailto:info@bromleyestatesmarbella.com) Urbanizacion El Rosario, CN340, Km 188, Marbella, Malaga 29603

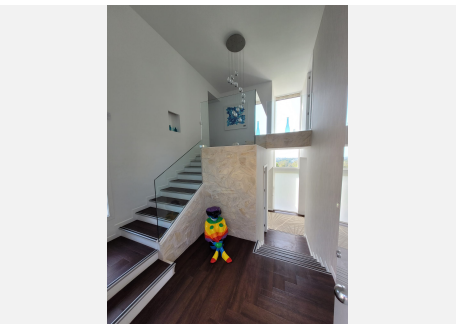


# BROMLEY ESTATES

## *Marbella*

basement there is a small room with bathroom, a gym area, laundry room, storage area and workshop.

Qualities of the house: Security system with cameras installed outside. Underfloor heating throughout the house. Air conditioning hot and cold installed. Heated swimming pool. Fully equipped and furnished kitchen. An ideal house to enjoy a quiet life, with low maintenance costs and with the best panoramic views of the sea, golf course and La Concha mountain.





# BROMLEY ESTATES

*Marbella*

