



## PENTHOUSE 2 BEDROOMS 2 BATHROOMS IN PUERTO BANÚS

📍 Puerto Banús

REF# R4868668 €1,200,000

BEDS

2

BATHS

2

BUILT

120 m<sup>2</sup>

TERRACE

60 m<sup>2</sup>

Spectacular Renovated Penthouse in Puerto Banús. Due to its location in Medina Garden, this penthouse is an excellent investment for use as a vacation rental or as a second home.

This penthouse has been exquisitely renovated with numerous details. It consists of a spacious living room with an open kitchen to maximize space and create a sense of openness. There is a hallway leading to the two bedrooms, one of which is the master bedroom with an en-suite bathroom and a dressing area. There is also a second full bathroom.

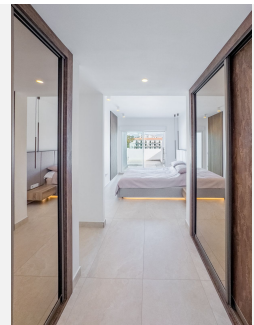
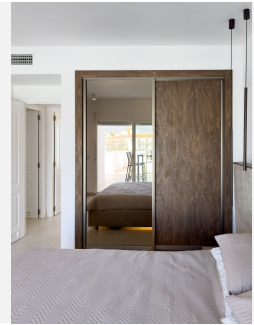
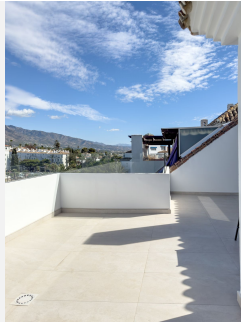
Both bedrooms and the living room have access to a large 60-square-meter terrace, offering a great view of La Concha, the main mountain in Marbella. The terrace features several distinct areas to fully enjoy the magnificent weather of the coast. Notably, there is a square-shaped area, perfect for placing sofas to create the ideal chill-out zone.

# BROMLEY ESTATES

*Marbella*

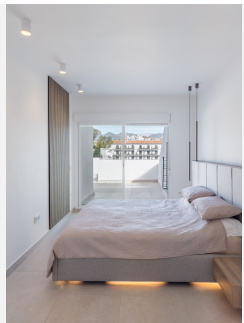
The complex offers 24-hour security, a swimming pool, a paddle tennis court, and well-maintained gardens. Additionally, the property includes an underground parking space and a storage room.

The unbeatable location allows you to walk to the beach in 2 minutes or reach the center of Puerto Banús in 5 minutes, all on foot.



# BROMLEY ESTATES

*Marbella*



# BROMLEY ESTATES

*Marbella*

