

BROMLEY ESTATES

Marbella



HOUSE 4 BEDROOMS 3 BATHROOMS IN ALHAURIN EL GRANDE

📍 Alhaurin el Grande

REF# R4900576 €895,000

BEDS

4

BATHS

3

BUILT

300 m²

PLOT

1000 m²

TERRACE

300 m²

Looking for a place to build your dream home with spectacular views or to make a smart investment in a privileged environment?

This plot of 905 m² located in the prestigious urbanization Sierra Gorda, in Alhaurín el Grande, is a unique opportunity.

With a buildability of 25%, you can design a detached house with all the amenities and space you need.

Surface: 1.200 m², an ideal size that combines space and manageability.

Buildability: Up to 25%, perfect for building a custom-designed home, with space for gardens, swimming pool, and leisure areas.

Natural environment: Surrounded by mountains and nature, the urbanization enjoys spectacular views and a pleasant climate all year round.

BROMLEY ESTATES

Marbella

Sierra Gorda is one of the most valued urbanizations in Alhaurín el Grande. It is known for its perfect balance between tranquility and proximity to services.

Just a few minutes from the center of Alhaurín el Grande, you will have access to supermarkets, schools, medical centers and a wide range of leisure activities.

First residence: Many families choose Sierra Gorda to live in because of its family and safe environment. In addition, its strategic location connects you quickly to Malaga, Marbella and the international airport, ideal for those who need to move for work or enjoy frequent getaways.

Smart investment: This development has shown steady growth in value thanks to demand from both local residents and foreigners seeking quality of life on the Costa del Sol.

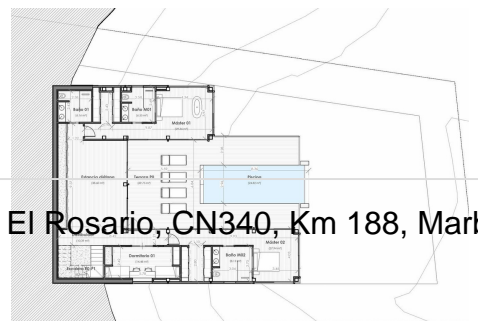
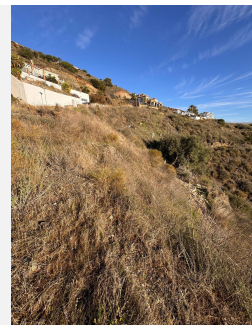
Added benefits:

Quick access: Excellent connections via major roads such as the A-404 and AP-7 motorways.

Quality of life: Fresh air, natural landscapes and an environment that invites relaxation.

This plot represents a unique combination of prime location, bespoke design possibilities and long-term value. Can you imagine living or investing here?

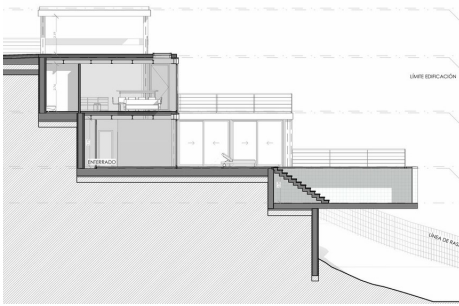
Contact us for more information, enquire about other available plots and discover why Sierra Gorda is the perfect place for you.



+34 952 939 460 · info@bromleyestatesmarbella.com · Urbanizacion El Rosario, CN340, Km 188, Marbella, Malaga 29603

BROMLEY ESTATES

Marbella



Sierra Gorda: Vanguardia y naturaleza en el Valle del Guadalhorce

Parcela de 854 m²
Lugar privilegiado con vistas panorámicas del Valle del Guadalhorce.

213 m² de construcción
Gran superficie optimizada para la máxima luminosidad y ventilación.

Ubicación Privilegiada:
Situado en el Puerto del Camí, corazón del Valle del Guadalhorce.

Planta de Ac (Superior)
Planta de 120 m² con vistas panorámicas del valle.

Planta Prima (Cana Social)
Sala comedor con piscina al aire libre y vistas panorámicas del valle.

Planta Baja (Cana Privada)
Cocina, sala de estar y vistas panorámicas del valle.

Piscina Infinita "Volada"
Estructura que parece fundirse con el cielo.

Integración Paisajística
Arquitectura integrada y estructuras que se funden con el entorno natural.

Acabados de Alto Nivel
Los detalles de acabados de alta calidad y materiales naturales.