



HOUSE 5 BEDROOMS 7 BATHROOMS IN BENAHAVIS

 Benahavis

REF# R4987966 €6,750,000

BEDS

5

BATHS

7

BUILT

815 m²

PLOT

4139 m²

Discover this architectural masterpiece that seamlessly blends contemporary design with nature. This 815 m² villa, set on a 4,139 m² plot, stands out for its fluid lines and passive design, featuring exposed concrete with high thermal inertia. Its entrance is a true spectacle, with a natural bamboo bridge over water leading to an impressive foyer, where a six meter tall ficus bonsai rises from a reflecting pond, illuminated by natural light streaming through a glass ceiling. Inspired by Frank Lloyd Wright and Mies van der Rohe, the villa appears to float over interconnected water elements, creating a serene and harmonious living experience.

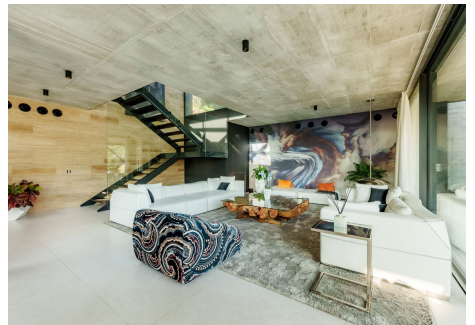
It offers five luxurious bedrooms, including a master suite with two walk in closets that open onto a private garden filled with conifers and jasmine. The en-suite bathroom features a retractable glass ceiling for starlit showers, complemented by luxurious brass fixtures from Noken. The villa perfectly combines elegance and functionality, boasting details such as a floating bridge connecting the east and west wings, a fully equipped kitchen, and a minimalist dining area that extends onto a terrace for alfresco dining. Inside, a serene Japanese garden and custom designed elements elevate the sophistication of the space. Designed for both entertainment and relaxation, it includes a state of the art cinema room, soon to be relocated beneath the

BROMLEY ESTATES

Marbella

pool for an immersive experience. The living spaces are adorned with mural art, a cozy fireplace, and expansive glass panels that offer breathtaking views of the hills.

From its unique architectural features to its top tier finishes, this villa is a sanctuary that celebrates the harmony between nature, modernity, and luxury, an exquisite retreat in Marbella's exclusive real estate market.



BROMLEY ESTATES

Marbella

