



## HOUSE 3 BEDROOMS 2 BATHROOMS IN BENAHAVIS

📍 Benahavis

REF# R5015641 €1,550,000

BEDS

3

BATHS

2

BUILT

189 m²

PLOT

1142 m²

Prime Villa to Redesign with Spectacular Sea and Mountain Vistas Situated in the highly sought-after and exclusive enclave of Puerto del Almendro, this Andalusian-style villa represents a prime investment opportunity on the Costa del Sol. Combining panoramic sea views, timeless architecture, and the rare advantage of a fully independent guest house, the property holds both lifestyle and financial appeal.

The main villa features a bright, spacious living area with expansive windows that maximize natural light and highlight the surrounding scenery. The kitchen and interior layout preserve authentic Andalusian charm, while three well-proportioned bedrooms and two bathrooms provide comfortable family accommodation.

Outdoors, the villa benefits from landscaped gardens, a covered terrace, and a private swimming pool — all designed for year-round Mediterranean living and strong rental appeal to high-end tenants or holidaymakers.

The independent guest house significantly enhances the property's versatility and revenue potential. With two bedrooms, a bathroom, kitchenette, and private terrace, it can serve as a luxury rental unit, guest

+34 952 939 460 · [info@bromleyestatesmarbella.com](mailto:info@bromleyestatesmarbella.com) Urbanizacion El Rosario, CN340, Km 188, Marbella, Malaga 29603



# BROMLEY ESTATES

## *Marbella*

accommodation, or dedicated workspace, offering flexible use and multiple income streams.

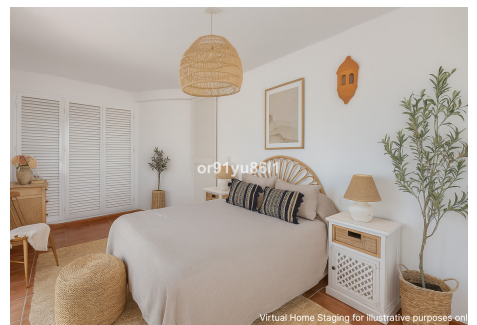
Properties in Puerto del Almendro are tightly held, ensuring long-term capital appreciation. This estate combines privacy, prestige, and proven demand, making it an exceptional acquisition for investors seeking both lifestyle value and secure returns in Marbella's luxury real estate market. The prestigious area around Benahavis boasts one of the most scenic landscapes to the west of the Costa del Sol; offering remarkable and picturesque views and more than ten golf courses, the mixture of sun, sea, golf and mountains make this charming abode a very special place to reside. Established in the area are some of the most exclusive mansion clubs in Europe, which contribute to the Benahavis' status as the richest municipality per capita in Andalucía. Its quaint white-washed village is considered to be the gastronomic capital of Andalucía and is home to some of the finest restaurants found anywhere in southern Spain. Spread across the beautiful countryside between the golden beaches of Marbella, Estepona and the spectacular mountains of Ronda, there is an excellent selection of modern apartments, penthouses and exclusive villas on the frontline golf and with panoramic views to the sea. The swift access to the coastal road makes commuting a pleasure and brings together a harmonious blend of comfortable, modern living with a natural Mediterranean environment





# BROMLEY ESTATES

## *Marbella*



# BROMLEY ESTATES

## *Marbella*

