



## HOUSE 5 BEDROOMS 5 BATHROOMS IN NUEVA ANDALUCIA

📍 Nueva Andalucia

REF# R5063380 €4,950,000

BEDS

5

BATHS

5

BUILT

444 m<sup>2</sup>

PLOT

1950 m<sup>2</sup>

TERRACE

300 m<sup>2</sup>

Exclusive Villa with Panoramic Views in the Heart of Nueva Andalucía

This majestic villa, nestled in the prestigious heart of Nueva Andalucía, embodies a lifestyle of unmatched elegance, comfort, and sophistication. With breathtaking views of Puerto Banús, the shimmering Mediterranean Sea, and the iconic La Concha mountain, this exceptional residence offers a panoramic setting that feels like a living postcard every day.

The villa boasts five spacious bedrooms and five stylish bathrooms, thoughtfully designed to combine luxury, privacy, and openness. Upon arrival, a grand driveway welcomes you, offering space for three to five vehicles. To the side, a discreet storage area provides the perfect place for garden tools, bicycles, or sports equipment.

# BROMLEY ESTATES

*Marbella*

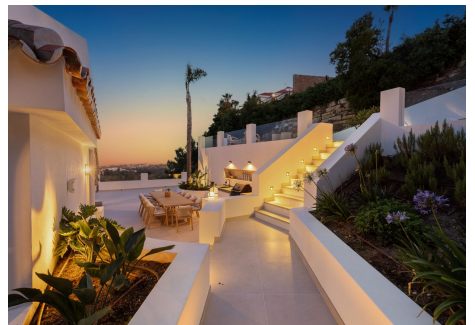
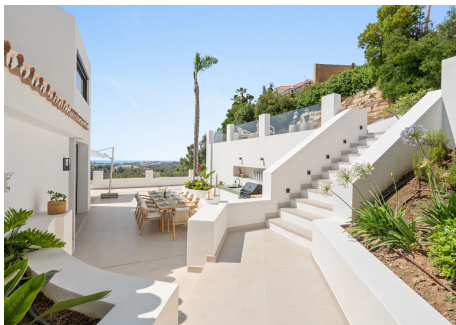
A unique feature of this property is its two separate entrances. The first, located beside the storage area, leads into a versatile space ideal as a home office or playroom. From here, you access three en-suite bedrooms, each with its own charm. Two enjoy stunning views of the sea and mountains, while the third overlooks lush greenery and rolling hills – a true retreat for those seeking peace and tranquility.

A stylish staircase connects to the main living area, where the living room, dining space, and kitchen flow together in an open, airy, and elegant ambiance. This floor also features a fourth bedroom with en-suite bathroom, which can conveniently serve as a guest toilet.

The villa's second access point is located on the opposite side of the plot. A charming exterior staircase leads to a beautifully appointed outdoor kitchen with a dining area – perfect for refined al fresco dinners under the stars. Here, you'll also find the main entrance and the spectacular infinity pool – a true architectural masterpiece with sweeping views over the sea, the mountains, and the vibrant Puerto Banús marina.

Inside, the living area exudes understated grandeur, featuring a large dining table and expansive windows framing the horizon. The state-of-the-art open-plan kitchen is fully equipped with premium appliances, generous storage, and exquisite finishes to satisfy even the most discerning gourmet.

The upper floor is entirely dedicated to the master suite – a sublime private sanctuary where luxury meets serenity. From the bed, enjoy uninterrupted views of the mountains and the sea. The suite includes a spacious walk-in wardrobe, a cozy lounge corner, and an elegant bathroom with a view of La Concha that makes every morning feel magical – a daily reminder of the extraordinary life this villa offers.





# BROMLEY ESTATES

*Marbella*





# BROMLEY ESTATES

## *Marbella*





# BROMLEY ESTATES

*Marbella*





# BROMLEY ESTATES

## *Marbella*

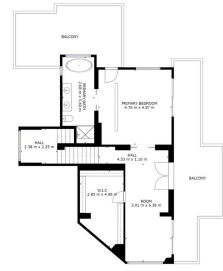


FIGURE 3

BRIDE OFFICIALS, AREA  
 1.000 m<sup>2</sup> (10.763 sq ft)  
 1.000 m<sup>2</sup> (10.763 sq ft)  
 1.000 m<sup>2</sup> (10.763 sq ft)  
 1.000 m<sup>2</sup> (10.763 sq ft)



FIGURE 1

BRIDE OFFICIALS, AREA  
 1.000 m<sup>2</sup> (10.763 sq ft)  
 1.000 m<sup>2</sup> (10.763 sq ft)  
 1.000 m<sup>2</sup> (10.763 sq ft)  
 1.000 m<sup>2</sup> (10.763 sq ft)



FIGURE 2

BRIDE OFFICIALS, AREA  
 1.000 m<sup>2</sup> (10.763 sq ft)  
 1.000 m<sup>2</sup> (10.763 sq ft)  
 1.000 m<sup>2</sup> (10.763 sq ft)  
 1.000 m<sup>2</sup> (10.763 sq ft)