

# BROMLEY ESTATES

*Marbella*



## MIDDLE FLOOR APARTMENT 2 BEDROOMS 2 BATHROOMS IN ALOHA

📍 Aloha

REF# R5081185 €1,192,500

BEDS

2

BATHS

2

BUILT

152 m<sup>2</sup>

TERRACE

31 m<sup>2</sup>

This apartment is located in Aloha, within the sought-after area of Nueva Andalucia, Marbella, Malaga. The property stands out for its generous dimensions and convenient layout, offering two bedrooms and two en-suite bathrooms. Its position provides residents with easy access to local amenities and some of the most prestigious areas in Marbella.

The apartment layout ensures comfortable living, with both bedrooms benefitting from private en-suite bathrooms, providing privacy and convenience. The terrace is ideal for outdoor relaxation or entertaining, while the spacious interior is designed for practical day-to-day living.

Residents have access to well-maintained communal facilities, including a swimming pool and garden areas. The property also includes a private garage, offering secure parking and additional storage options. The communal spaces are designed for both leisure and social interaction, enhancing the overall living experience.

+34 952 939 460 · [info@bromleyestatesmarbella.com](mailto:info@bromleyestatesmarbella.com) Urbanizacion El Rosario, CN340, Km 188, Marbella, Malaga 29603

# BROMLEY ESTATES

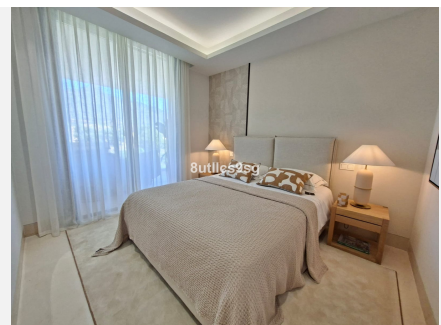
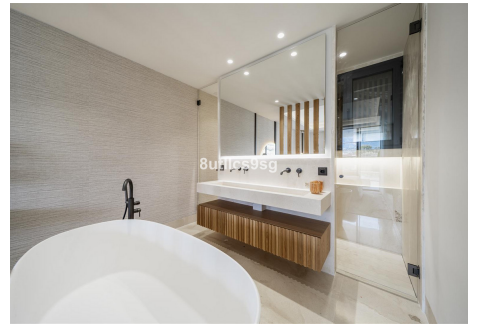
## *Marbella*

Situated within a well-established urbanisation, the apartment is conveniently located close to several golf courses, making it an excellent choice for golf enthusiasts. Puerto Banús is a short drive away, offering a wide range of shops, restaurants, and entertainment options. Marbella Centre and Estepona Centre are also easily accessible, providing further amenities and services within a short distance. The location combines tranquillity with proximity to key attractions on the Costa del Sol.



# BROMLEY ESTATES

*Marbella*



# BROMLEY ESTATES

*Marbella*

