

# BROMLEY ESTATES

*Marbella*



## HOUSE 3 BEDROOMS 4 BATHROOMS IN ESTEPONA

📍 Estepona

REF# R5139001 €1,400,000

BEDS

3

BATHS

4

BUILT

220 m<sup>2</sup>

TERRACE

334 m<sup>2</sup>

Modern Luxury Villa with Panoramic Golf and Sea Views in Estepona!

This modern, newly built villa at Valle Romano Golf in Estepona offers outstanding panoramic views of both the golf course and the Mediterranean Sea.

Valle Romano is a sought-after area on the Costa del Sol, known for its golf course, Valle Romano Golf Resort, and is popular among golfers, holidaymakers, and those seeking a peaceful year-round residence close to both golf and the beach.

The house is designed with a focus on light, space, and comfort, featuring a private pool and a rooftop terrace with spectacular views. On the entrance level, you'll find an open-plan kitchen and dining area opening onto large windows and a fantastic terrace, perfect for relaxation or social gatherings. One floor down is a stylish and cozy TV room, while the upper floor accommodates three bedrooms with three bathrooms and a generous balcony with magical views. The villa's rooftop terrace elevates the experience even further with even more impressive vistas.

+34 952 939 460 · [info@bromleyestatesmarbella.com](mailto:info@bromleyestatesmarbella.com) Urbanizacion El Rosario, CN340, Km 188, Marbella, Malaga 29603

# BROMLEY ESTATES

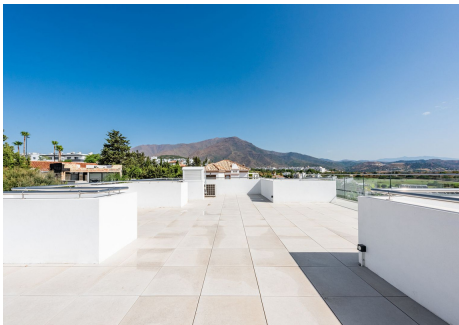
## *Marbella*

Private parking is conveniently located at the side of the house, and amenities such as a supermarket, pharmacy, and restaurants are only 3 km away, while Estepona's lively marina area and new promenade are just 5 km away. This villa combines modern luxury, breathtaking views, and an unbeatable location – a dream for anyone wishing to enjoy the Costa del Sol lifestyle all year round.



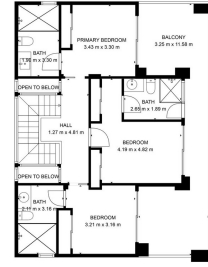
# BROMLEY ESTATES

*Marbella*

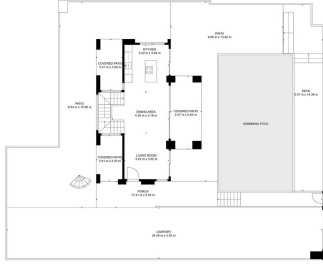


# BROMLEY ESTATES

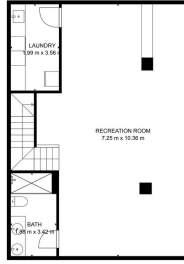
*Marbella*



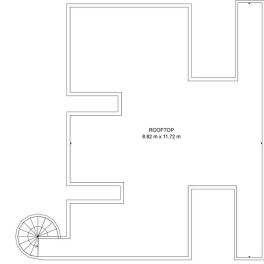
**TOTAL NET AED**  
 BELOW GROUND: 70.00 m<sup>2</sup> (18.75 SQ. FEET) - 70.00 m<sup>2</sup> (18.75 SQ. FEET) - 70.00 m<sup>2</sup> (18.75 SQ. FEET)  
 EXCLUDED: BALCONY (3.26 m<sup>2</sup>), TERRACE (11.58 m<sup>2</sup>), COVERED PATIO (38.40 m<sup>2</sup>)  
 GROUND: 11.58 m<sup>2</sup> (2.54 SQ. FEET)  
 ABOVE: 21.24 m<sup>2</sup> (4.81 SQ. FEET)  
 TOTAL: 102.82 m<sup>2</sup> (22.14 SQ. FEET)



**TOTAL NET AED**  
 BELOW GROUND: 70.00 m<sup>2</sup> (18.75 SQ. FEET) - 70.00 m<sup>2</sup> (18.75 SQ. FEET) - 70.00 m<sup>2</sup> (18.75 SQ. FEET)  
 EXCLUDED: BALCONY (3.26 m<sup>2</sup>), TERRACE (11.58 m<sup>2</sup>), COVERED PATIO (38.40 m<sup>2</sup>)  
 GROUND: 11.58 m<sup>2</sup> (2.54 SQ. FEET)  
 ABOVE: 21.24 m<sup>2</sup> (4.81 SQ. FEET)  
 TOTAL: 102.82 m<sup>2</sup> (22.14 SQ. FEET)



**TOTAL NET AED**  
 BELOW GROUND: 70.00 m<sup>2</sup> (18.75 SQ. FEET) - 70.00 m<sup>2</sup> (18.75 SQ. FEET) - 70.00 m<sup>2</sup> (18.75 SQ. FEET)  
 EXCLUDED: BALCONY (3.26 m<sup>2</sup>), TERRACE (11.58 m<sup>2</sup>), COVERED PATIO (38.40 m<sup>2</sup>)  
 GROUND: 11.58 m<sup>2</sup> (2.54 SQ. FEET)  
 ABOVE: 21.24 m<sup>2</sup> (4.81 SQ. FEET)  
 TOTAL: 102.82 m<sup>2</sup> (22.14 SQ. FEET)



**TOTAL NET AED**  
 BELOW GROUND: 70.00 m<sup>2</sup> (18.75 SQ. FEET) - 70.00 m<sup>2</sup> (18.75 SQ. FEET) - 70.00 m<sup>2</sup> (18.75 SQ. FEET)  
 EXCLUDED: BALCONY (3.26 m<sup>2</sup>), TERRACE (11.58 m<sup>2</sup>), COVERED PATIO (38.40 m<sup>2</sup>)  
 GROUND: 11.58 m<sup>2</sup> (2.54 SQ. FEET)  
 ABOVE: 21.24 m<sup>2</sup> (4.81 SQ. FEET)  
 TOTAL: 102.82 m<sup>2</sup> (22.14 SQ. FEET)