



TOWNHOUSE 4 BEDROOMS 3.5 BATHROOMS IN MANILVA

📍 Manilva

REF# R5152150 €425,000

BEDS	BATHS	BUILT	PLOT	TERRACE
4	3.5	119 m²	129 m²	39 m²

This exceptional townhouse is located in a sought-after frontline beach complex, offering the perfect blend of coastal living and modern convenience.

As you enter, the kitchen is positioned to the right, complete with a separate laundry and storage room. To the left, you'll find a guest toilet, followed by a staircase leading to the upper floors. Continuing straight through the hallway, the spacious living and dining area opens onto a generous terrace, which enjoys sunlight all year round. The outdoor space is thoughtfully designed, with a covered section for dining and an open area to bask in the Spanish sun. From here, you can take in glimpses of the sea and beach, adding to the charm of this seaside home.

A rare and highly desirable feature of this property is its private entrance to an underground garage, providing space for two cars and a large storage room—an invaluable asset in a beachfront location.

BROMLEY ESTATES

Marbella

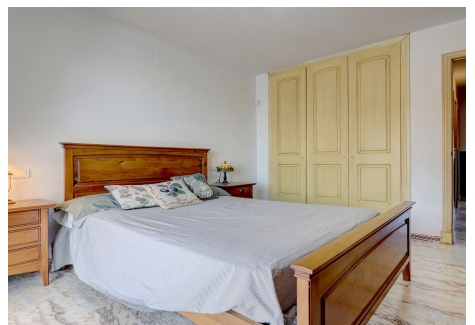
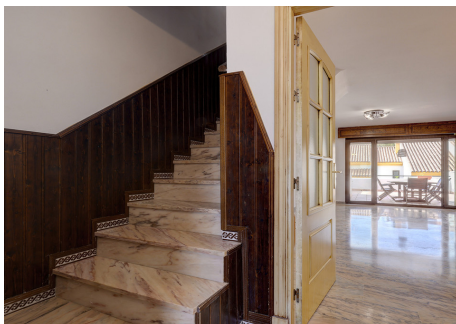
Ascending to the first floor, you'll find three well-proportioned bedrooms, all with fitted wardrobes. The master suite enjoys its own en-suite bathroom and a private balcony with beautiful sea views. The two additional bedrooms—one double and one single—share a bathroom on this level. To make the most of the fresh sea breeze, all bedrooms are fitted with mosquito nets.

The second floor features a unique attic-style fourth bedroom with a slanted roof, offering plenty of character. This room benefits from access to a spacious private roof terrace, perfect for relaxing in the sun or enjoying panoramic views.

The property also benefits from solar-powered hot water and air conditioning throughout.

A rare opportunity to own a spacious beachfront home with private parking, stunning outdoor spaces, and the charm of Mediterranean living.

Come View With Me!



BROMLEY ESTATES

Marbella



BROMLEY ESTATES

Marbella

