



MIDDLE FLOOR APARTMENT 3 BEDROOMS 2 BATHROOMS IN FUENGIROLA

📍 Fuengirola

REF# R5152696 €535,000

BEDS

3

BATHS

2

BUILT

117 m²

TERRACE

4 m²

Bright renovated apartment just steps from Fuengirola's stunning seafront!

Welcome to this beautifully renovated apartment located in the heart of Los Boliches where everything you need is within walking distance.

The apartment is sold furnished and comes with a tourist license, making it ready for immediate personal use or rental income. The price also includes two underground parking spaces with convenient lift access. The well-maintained community offers a lovely garden and a swimming pool open throughout the year, a rare advantage in such a central location close to the sea.

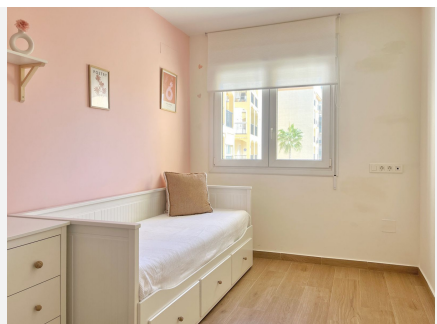
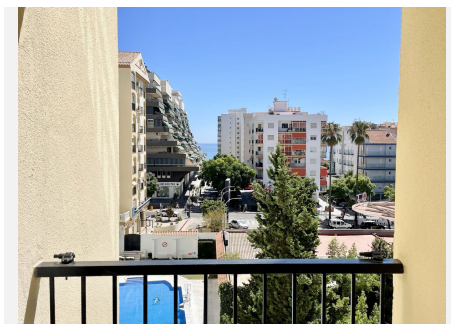
Here you enjoy a central yet peaceful location, perfect for those who value quality of life with the beach and vibrant city life close by. Facing southeast, the home features a modern fully equipped kitchen opening onto a bright hallway and a spacious living room with direct access to the balcony.

BROMLEY ESTATES

Marbella

The apartment offers three bedrooms, one currently used as a practical walk-in closet but easily converted back into a bedroom if preferred. The master bedroom includes its own balcony and a private en-suite bathroom with shower. A second fully tiled bathroom with shower is also available. For year-round comfort, the property has air conditioning in both the living room and master bedroom.

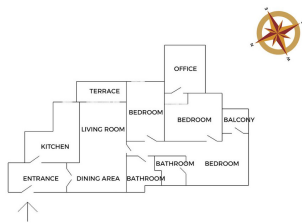
In the surrounding area you will find everything you might need: supermarkets, restaurants, shops, a local market, bus connections and a train station with direct links to Málaga city and the airport. If you are looking for a turnkey home on the Costa del Sol with the beach around the corner and all amenities nearby, this apartment could be your perfect match. Book your private viewing today!



+34 952 939 460 • info@bromleyestatesmarbella.com Urbanizacion El Rosario, CN340, Km 188, Marbella, Malaga 29603

BROMLEY ESTATES

Marbella



Measurements were taken on site with a CLIM 50-27 CG PROFESSIONAL

