



HOUSE 4 BEDROOMS 4 BATHROOMS IN TORREMUELLE

📍 Torremuelle

REF# R5154784 €1,295,000

BEDS

4

BATHS

4

BUILT

314 m²

= A Modern Villa with Exceptional Views and Next-Level Comfort =

Welcome to a home that truly stands out – even in an area known for quality living.

This exclusive property in Torremuelle, Benalmádena isn't just spacious and well-designed it offers something truly rare:

Uninterrupted views, premium community features, and thoughtful upgrades that make daily life effortlessly smooth.

Highlights include:

= 314 m² of modern living space across three levels – with the option to add a 5th bedroom

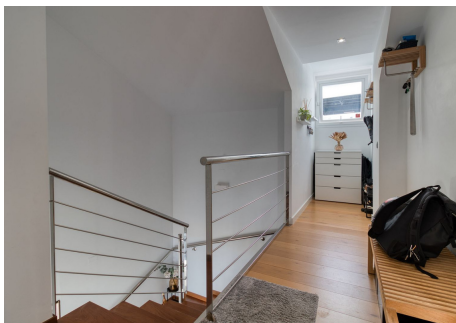
= 4 bedrooms, 4 bathrooms, and 1 guest toilet

BROMLEY ESTATES

Marbella

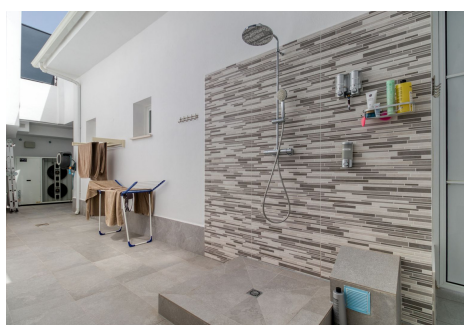
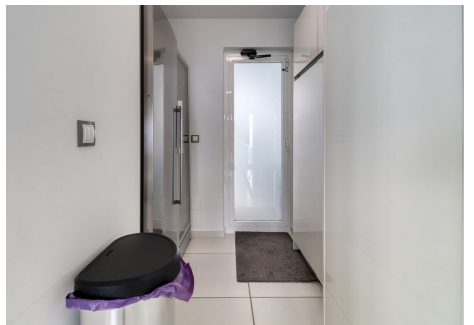
- = 2 living rooms with sea views and amazing natural light
- = The best view in the entire community – overlooking the sea and Fuengirola
- = Brand new 13 kW solar panel system + 11 kW battery pack – energy efficient and future-proof
- = Private garage and new exterior tiling throughout
- = Jacuzzi, outdoor shower, and covered outdoor kitchen
- = Infinity pool (open year-round), fully equipped gym, and co-working area
- = Exclusive clubhouse available for private events
- = Located right next to a peaceful olive-tree park
- = Just a 15-minute walk to Torremuelle train station
- = Just 20 minutes from the airport and close to charming Benalmádena Pueblo

Its modern architecture, unbeatable views, and high-end features, this is more than a home. It's a place to thrive.



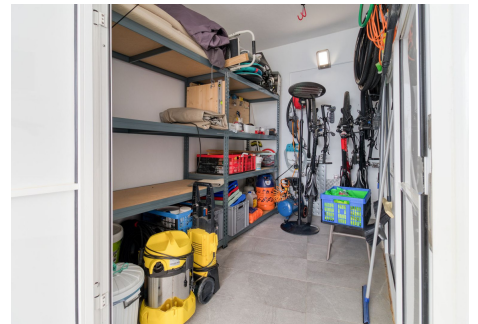
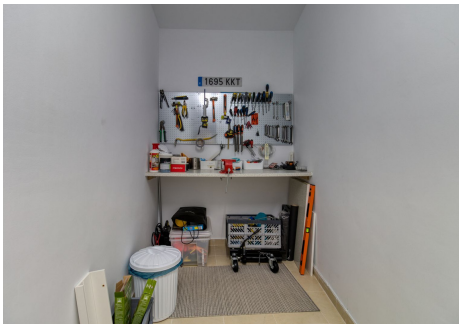
BROMLEY ESTATES

Marbella



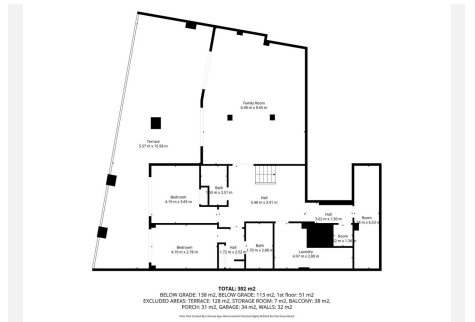
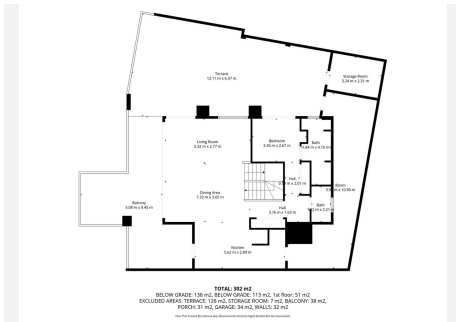
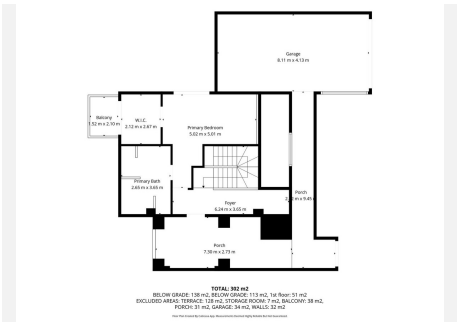
BROMLEY ESTATES

Marbella



BROMLEY ESTATES

Marbella



BROMLEY ESTATES

Marbella



TOTAL 382 m²
BELOW GROUND 130 m², BELOW GROUND 113 m², 1st Floor 23 m²
EXCLUDED AREA TERRACE 12 m², STAIRCASE 7 m², BALCONY 28 m²
POND 21 m², GARAGE 24 m², WALLS 22 m²