



SEMI-DETACHED HOUSE 2 BEDROOMS 2 BATHROOMS IN MANILVA

📍 Manilva

REF# R5164741 €315,000

BEDS

2

BATHS

2

BUILT

143 m²

PLOT

252 m²

TERRACE

12 m²

Fantastic Semi-detached Houses in Manilva with private pool, beautiful views, and just 5 minutes' walk from the beach.

• Turnkey semi-detached house distributed as follows:

Ground floor: spacious living-dining room with open-plan kitchen, 1 guest toilet, porch, and access to a large garden with pool.

Upper floor: 2 large bedrooms with built-in wardrobes and private terrace, 1 full bathroom.

Basement: storage area and access to garage.

Built area: 143m² including porches and terraces of 43m². Gardens 45m².

• Semi-detached house to renovate distributed as follows:

Upper floor: spacious living-dining room with open-plan kitchen, 1 guest toilet, and large terrace.

BROMLEY ESTATES

Marbella

Ground floor: 2 large bedrooms with built-in wardrobes and private terrace, 1 full bathroom. Access to porch and large garden with pool.

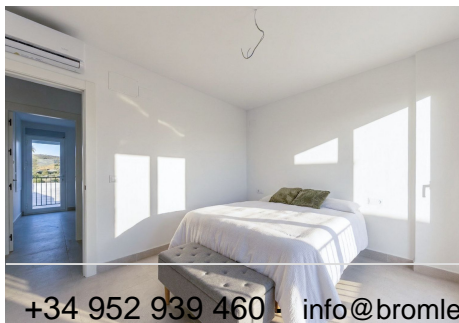
Basement: storage area and access to garage (optional)

Built area: 143m² including porches and terraces of 43m². Gardens from 60m² to 100m².

Distances:

Beach: 750m.

Supermarket: 620m.



BROMLEY ESTATES

Marbella

