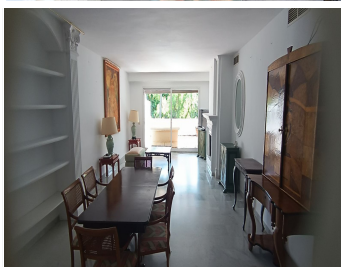
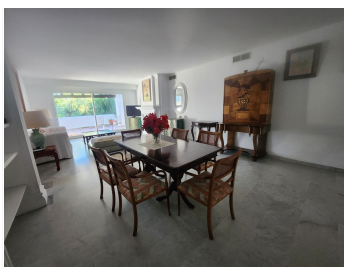
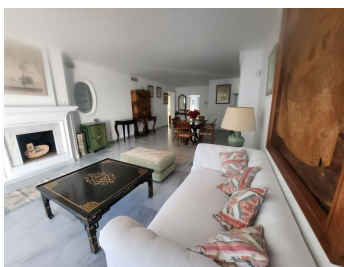


BROMLEY ESTATES

Marbella



PENTHOUSE DUPLEX 3 BEDROOMS 3.5 BATHROOMS IN GUADALMINA BAJA

📍 Guadalmina Baja

REF# R5210194 €900,000

BEDS

3

BATHS

3.5

BUILT

220 m²

TERRACE

125 m²

Large duplex penthouse apartment located in one of the most sought-after developments in Guadalmina Baja, Alhambradel Golf 1, offering a unique setting surrounded by lush tropical gardens and paddle tennis courts. The community has an exceptional pool complex with its own restaurant.

The apartment consists of 3 bedrooms, all with en-suite bathrooms (2 on the ground floor and one upstairs), two of which have access to a terrace, a large living-dining room with a fireplace and access to a terrace, a separate kitchen, and a guest bathroom.

This apartment has a private elevator from the ground floor to the first floor, and the price also includes an underground parking space and storage room.

This house next to Casasola beach, Guadalmina baja, is located right on the cusp between San Pedro and Guadalmina. The well-established community is renowned for its luxurious and extensive gardens and offers the perfect community life for a family with children who can benefit from an open and safe space.

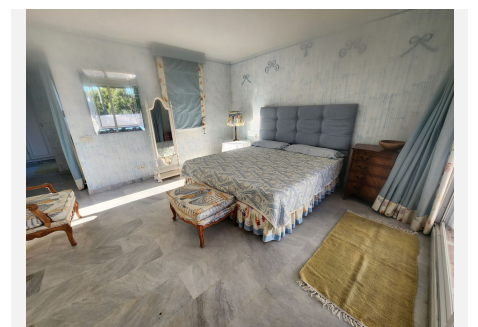
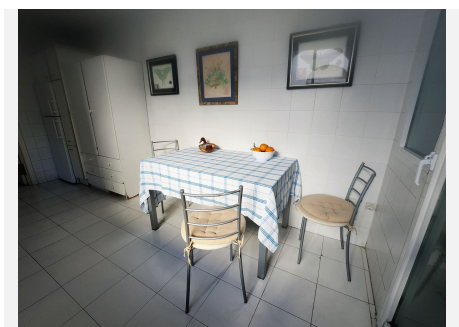
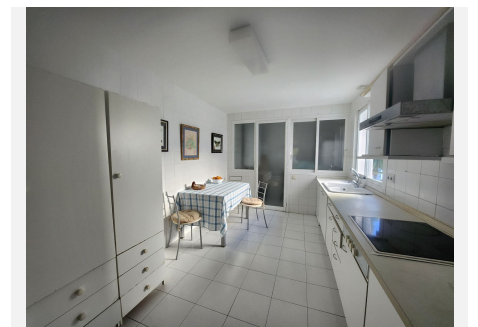
A huge duplex penthouse with many square meters, big terraces, south orientation,, easy access to transportation, shops, schools, sports facilities... and of course the beach!

+34 952 939 460 · info@bromleyestatesmarbella.com Urbanizacion El Rosario, CN340, Km 188, Marbella, Malaga 29603

BROMLEY ESTATES

Marbella

Better to see it, it won't disappoint.



+34 952 939 460 · info@bromleyestatesmarbella.com Urbanizacion El Rosario, CN340, Km 188, Marbella, Malaga 29603

BROMLEY ESTATES

Marbella

