



## HOUSE 7 BEDROOMS 5 BATHROOMS IN ALOHA

 Aloha

REF# R5211865    €4,495,000

BEDS	BATHS	BUILT	PLOT	TERRACE
7	5	660 m <sup>2</sup>	1240 m <sup>2</sup>	50 m <sup>2</sup>

### Elegant 7-Bedroom Frontline Golf Villa with Iconic Mountain Views – Nueva Andalucía

Introducing a spectacular Andalusian villa perfectly positioned on the front line of Aloha Golf, offering breathtaking panoramic views of La Concha and the lush green fairways below. Located on a peaceful cul-de-sac, this home balances serene privacy with close proximity to Marbella's best amenities, including Puerto Banús and Aloha Gardens.

The floor plan has been masterfully designed for comfort and convenience. The main living areas—kitchen, dining room, and lounge—are interconnected, each opening directly onto spacious terraces and outdoor entertaining spaces. This creates a natural flow and floods the home with sunlight throughout the day.

The villa features seven generous en-suite bedrooms. Those located on the lower level benefit from direct access to the gardens and swimming pool, offering a true Mediterranean resort-style experience.

# BROMLEY ESTATES

*Marbella*

With timeless Andalusian architecture and premium finishes, this villa presents an extraordinary opportunity to own a high-standard luxury residence in one of Nova Andalucía's most prestigious locations.

## Property Overview

- Prime frontline golf position overlooking Aloha Golf Course
- Panoramic views of La Concha
- Quiet cul-de-sac in prestigious Nueva Andalucía
- Minutes from Puerto Banús & Aloha Gardens

## Interior Features

- Elegant Andalusian architecture
- Open-plan living with abundant natural light
- Seamless indoor-outdoor flow from all social areas
- 7 spacious bedrooms, all with en-suite bathrooms
- Lower-level bedrooms with direct garden & pool access

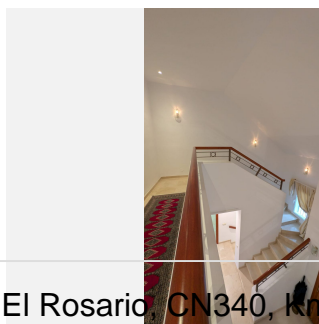
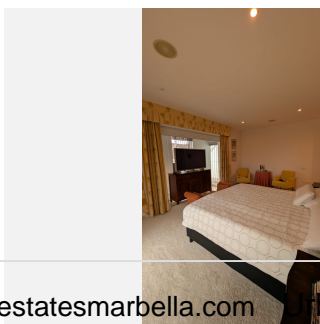
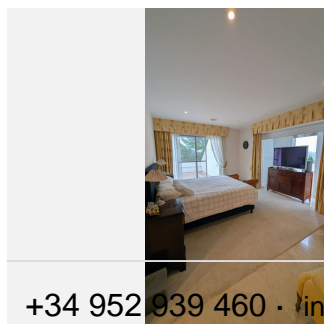
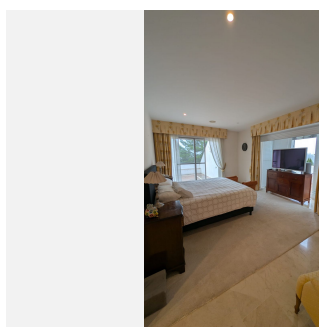
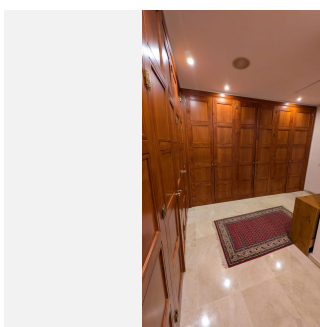
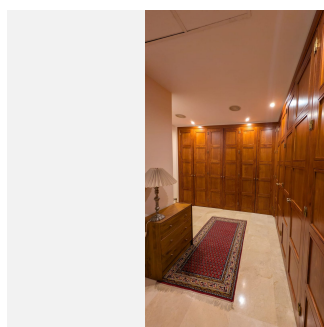
## Outdoor Features

- Beautifully landscaped gardens
- Sun-drenched terraces & outdoor lounging areas
- Private pool with mountain and golf views

## Why This Property?

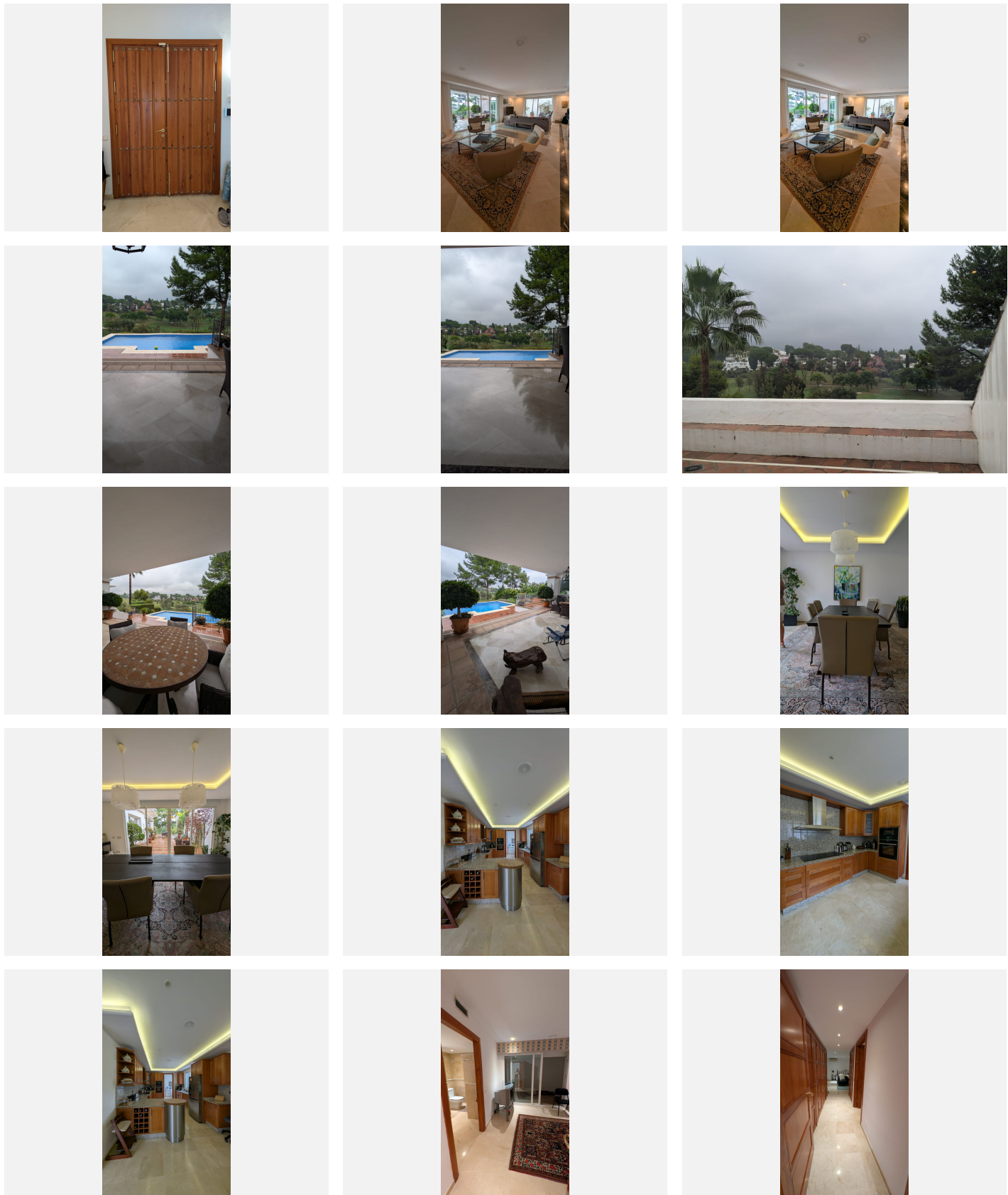
- Exceptional floor plan for everyday living
- Ideal as a permanent residence or luxury holiday home
- Rare opportunity in the most desired area of Marbella's Golf Valley

Perfect as a full-time family home or a glamorous holiday retreat, this property is truly one of a kind.



# BROMLEY ESTATES

*Marbella*





# BROMLEY ESTATES

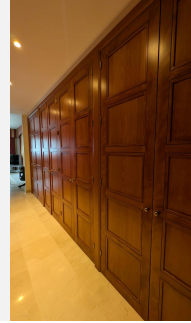
## *Marbella*





# BROMLEY ESTATES

*Marbella*



# BROMLEY ESTATES

## *Marbella*

---

