

BROMLEY ESTATES

Marbella



HOUSE 6 BEDROOMS 7 BATHROOMS IN NUEVA ANDALUCIA

📍 Nueva Andalucia

REF# R5211964 €6,900,000

BEDS	BATHS	BUILT	PLOT	TERRACE
6	7	1727 m ²	3400 m ²	480 m ²

Villa Herencia stands as a magnificent masterpiece of classic architecture, embodying timeless elegance and exceptional craftsmanship.

Gracefully positioned in Nueva Andalucía- on one of Marbella's most coveted addresses, this west-facing landmark residence sits on a 3,400 m² plot and captivates with its grand, refined appearance. Its 1,727 m² of interiors showcase soaring double-height ceilings, intricate woodwork, and hand-finished marble, creating spaces of enduring beauty and sophisticated character.

From the moment you pass through the grand gates, a sense of grandeur unfolds as artistry, privacy, and serenity blend harmoniously. Inside, bespoke detailing and architectural symmetry set the tone for classic luxury throughout.

BROMLEY ESTATES

Marbella

The residence features six spacious bedroom suites, each with its own en-suite bathroom, plus an additional bathroom and five guest toilets, ideal for family living and large-scale hosting. Six further rooms provide dedicated spaces for dining, lounging, office, games, and entertainment. All three floors are connected by an elevator, and underfloor heating throughout, along with individual air-conditioning units in every room, ensures absolute comfort.

The primary suite serves as a private retreat, complete with a large terrace offering panoramic views across the valley, the landscaped gardens, and glimpses of the Mediterranean Sea.

Living areas flow seamlessly into the lush gardens, complemented by more than 480 m² of terraces that create a perfect indoor-outdoor lifestyle. The grounds include a large swimming pool and a private tennis court, enhancing the estate's resort-style environment under the Mediterranean sun. A fully equipped outdoor kitchen adds convenience for dining with family and friends.

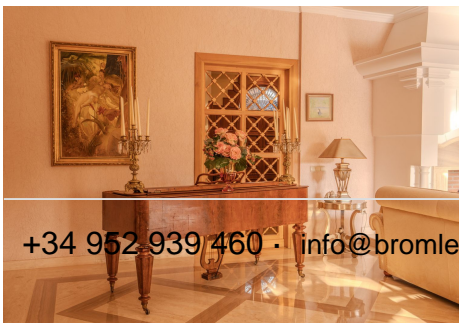
On the basement level, a dedicated wellness spa awaits, featuring an indoor heated pool, gym, sauna, and jacuzzi – fulfilling all leisure and fitness needs. A self-contained guest or staff studio further enhances the property's versatility.

The garage, accommodating up to 9 cars, offers both practicality and prestige, ideal for a collector.

Located in an exclusive area of Nueva Andalucía, the property combines tranquility with exceptional accessibility. Within walking distance of Aloha , Centro Plaza, and Puerto Banús, and Las Brisas, Aloha Golf, and Los Naranjos, three of Marbella's championship golf courses – are only minutes away.

Nearby, you'll find fine dining, charming cafés, and esteemed international schools including Aloha College and Swans International.

Beyond its architectural and lifestyle appeal, the estate represents a rare investment opportunity, combining scale, location, and pedigree in one of Europe's most desirable real estate markets.



+34 952 939 460 · info@bromleyestatesmarbella.com Urbanizacion El Rosario, CN340, Km 188, Marbella, Malaga 29603

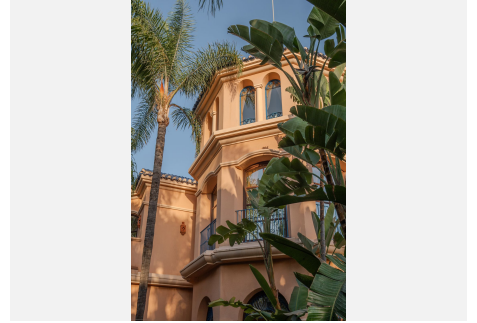
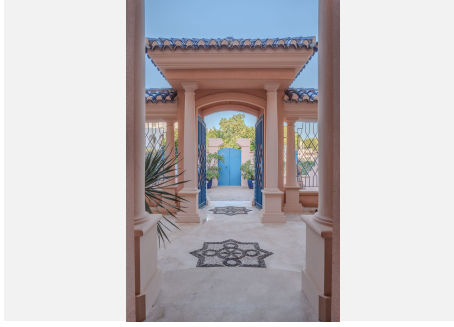
BROMLEY ESTATES

Marbella



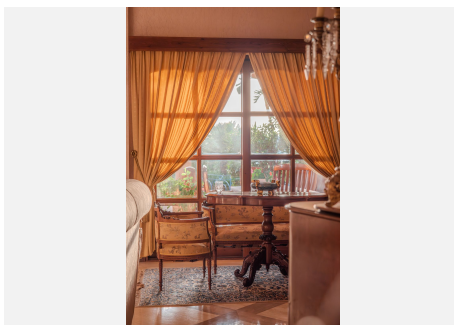
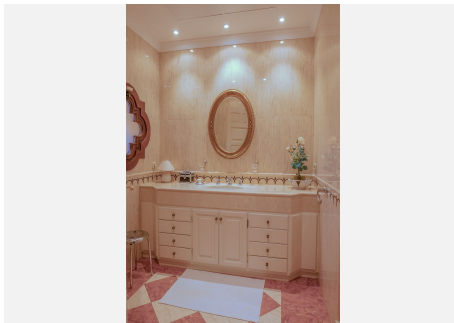
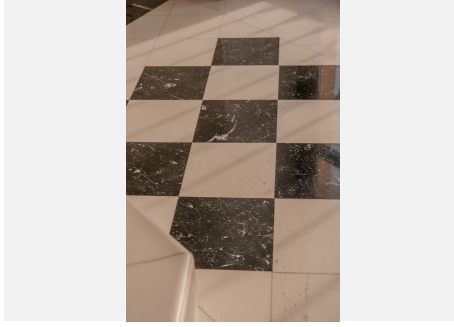
BROMLEY ESTATES

Marbella



BROMLEY ESTATES

Marbella



BROMLEY ESTATES

Marbella

