



## PENTHOUSE DUPLEX 4 BEDROOMS 3 BATHROOMS IN GUADALMINA BAJA

📍 Guadalmina Baja

REF# R5221423 €1,598,000

BEDS

4

BATHS

3

BUILT

279 m<sup>2</sup>

TERRACE

71 m<sup>2</sup>

### Luxury Penthouse Duplex – Tropical Serenity and Timeless Elegance

Experience the essence of tropical tranquility in this exquisite penthouse duplex in Guadalmina Baja, set amidst lush landscaped gardens and soothing water features. Meandering pathways wind through vibrant palms and exotic blooms, leading to a gentle stream filled with koi fish and lily pads, infusing the air with calm and natural harmony. Designed by a renowned landscape architect, the gardens open out to a turquoise lagoon with inviting sunbathing areas and a pool bar — perfect for relaxing with family, enjoying a refreshing drink, or simply unwinding in nature's embrace.

Inside, sophistication meets serenity. The elegant living room features a grand domed ceiling with chandelier, a working fireplace, and double-aspect windows that bathe the space in natural light. Glass doors open onto a beautiful covered terrace overlooking the gardens — ideal for alfresco dining or quiet evenings. The fully fitted designer kitchen is a showpiece of style and functionality, complete with Bosch

+34 952 939 460 · [info@bromleyestatesmarbella.com](mailto:info@bromleyestatesmarbella.com) Urbanizacion El Rosario, CN340, Km 188, Marbella,  
Malaga 29603

# BROMLEY ESTATES

## *Marbella*

appliances and an American-style fridge freezer with ice and water system.

On the lower level, you'll find two beautifully appointed bedrooms, both designed to offer comfort, privacy, and a connection to the surrounding nature. Each features elegant fitted wardrobes and garden views that create a sense of calm and space — ideal for visiting family or guests. One includes its own private terrace and ensuite bathroom, providing a peaceful retreat where you can wake to the sound of birdsong. Both bathrooms are tastefully finished with high-quality fittings and a soft, contemporary aesthetic.

Upstairs, the primary suite is a private sanctuary, featuring a Bali-inspired ensuite bathroom, dressing room, and two sunny terraces with breathtaking mountain and garden views.

A graceful spiral staircase ascends to a versatile fourth bedroom or yoga/meditation room, opening onto a private solarium terrace with spectacular views of La Concha and the Mediterranean Sea.

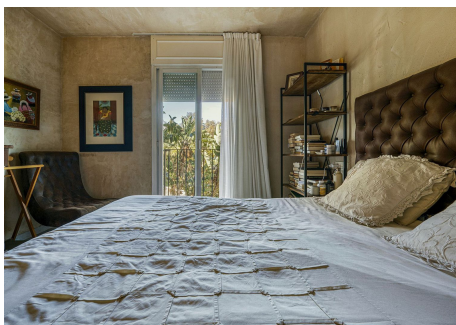
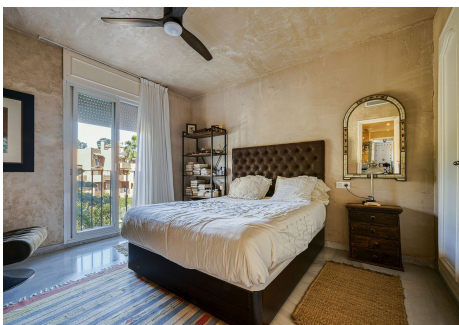
This remarkable residence captures the harmony of nature, light, and luxury — a peaceful haven designed for those who appreciate elegance in its purest form. Ideally situated next to the prestigious Club de Padel Alhambra del Golf, it is within walking distance of the top-rated San José School, Guadalmina Commercial Centre, and many exclusive beach clubs, including the renowned Barbillon Marbella. Perfectly positioned between Marbella and Estepona — both just a 10-minute drive away — and only five minutes from lively San Pedro, this exceptional home offers the perfect balance of tranquility, convenience, and refined coastal living.





# BROMLEY ESTATES

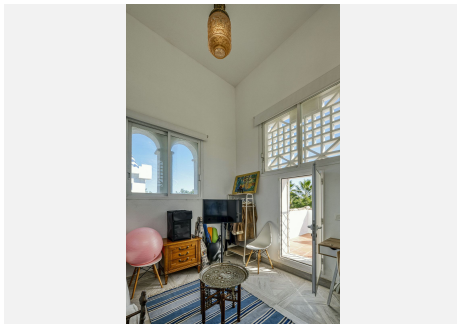
## *Marbella*





# BROMLEY ESTATES

## *Marbella*





# BROMLEY ESTATES

*Marbella*

