

PENTHOUSE DUPLEX 3 BEDROOMS 3 BATHROOMS IN LOS ARQUEROS

📍 Los Arqueros

REF# R5222125 €995,000

BEDS

3

BATHS

3

BUILT

200 m²

TERRACE

180 m²

A rare chance to buy this purpose built double penthouse frontline to the Los Arqueros golf. This penthouse benefits from maybe the best position in Los Arqueros and offers amazing inside and outside space with ample terraces plus a 24m long roof terrace with storeroom and BBQ area.

A very popular community within Los Arqueros Golf consisting of 2 and 3 bedroom apartments and penthouses, being just a short walk to the Clubhouse and restaurant, pro shop and driving range. Built over two phases, all apartments have a south or south westerly aspect overlooking the established 18-hole Los Arqueros golf course and the new 9-hole course towards the Mediterranean Sea.

La Finca, as expected, offers the high standards expected from a Taylor Wimpey build, and includes cream marble flooring throughout, fitted designer kitchen with Bosch appliances and hot and cold A/C. Set in mature landscaped gardens residencial La Finca boasts two communal swimming pools.

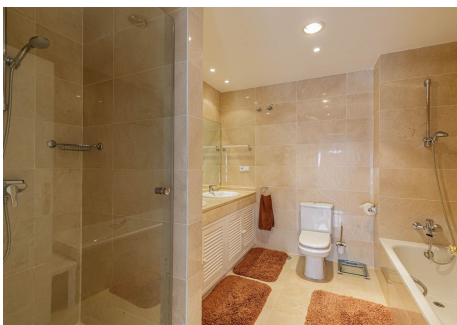
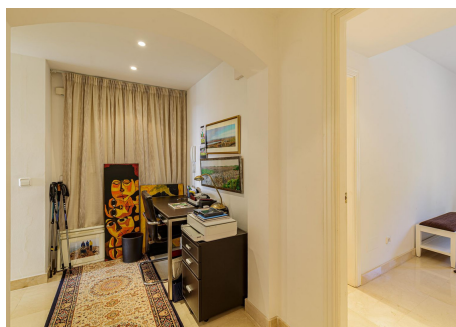
BROMLEY ESTATES

Marbella

Los Arqueros Golf & Country Club is a prestigious golf club located in the municipality of Benahavís, 15 min from Marbella, in the province of Malaga, Spain. The club was designed by the legendary Spanish golfer Severiano Ballesteros and opened its doors in 1991. It is known for its beautiful setting in the Sierra de Ronda foothills, offering panoramic views of the Mediterranean Sea and the surrounding mountains.

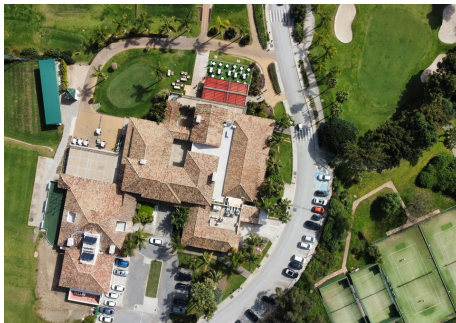
The history of Los Arqueros Golf & Country Club dates back to the late 1980s when Ballesteros, who had achieved great success as a professional golfer, embarked on a career in golf course design. He collaborated with Spanish architect Antonio García Garrido to create a challenging and picturesque golf course in the Costa del Sol region.

The construction of Los Arqueros Golf & Country Club began in 1989, and it was officially inaugurated in 1991. The course covers an area of approximately 60 hectares and features 18 holes spread across a hilly landscape with numerous natural obstacles such as ravines, streams, and lakes. Ballesteros' design aimed to incorporate the natural features of the land while creating a demanding yet enjoyable golfing experience for players of all levels.



BROMLEY ESTATES

Marbella



BROMLEY ESTATES

Marbella

