



HOUSE 3 BEDROOMS 4 BATHROOMS IN FUENGIROLA

📍 Fuengirola

REF# R5223499 €995,000

BEDS

3

BATHS

4

BUILT

303 m²

TERRACE

30 m²

This villa is located in an elevated and quiet residential area of Fuengirola, offering completely open views towards Sohail Castle, the sea and the surrounding mountains. The position and orientation of the property provide excellent natural light and a high level of privacy.

The house is arranged over two main floors, plus a semi-basement level with multiple possibilities for use. The property offers three bedrooms, each one with its own en-suite bathroom, ensuring comfort and privacy in the sleeping area. In addition, there is a guest toilet, a separate kitchen, and a spacious and bright living-dining room with direct access to the terraces and outdoor areas.

The living area also features a fireplace, creating a warm and comfortable atmosphere, particularly during the winter months.

The property offers two large terraces, ideal for enjoying the outdoor space throughout the year, whether for relaxing moments or entertaining. Outside, there is a private swimming pool and garden area, creating a pleasant and versatile environment.

BROMLEY ESTATES

Marbella

The construction follows a North-European building style, with special attention paid to durability, insulation and interior comfort. The walls are designed to maintain a stable indoor temperature, and the windows are equipped with double glazing, offering improved energy efficiency and acoustic insulation.

Additional features include:

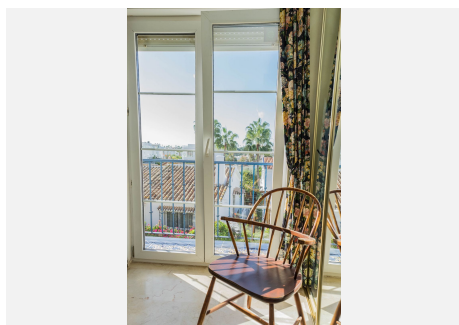
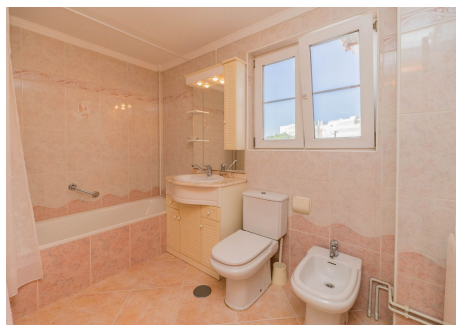
Central heating

Fireplace in the living room

Water recycling system for garden irrigation

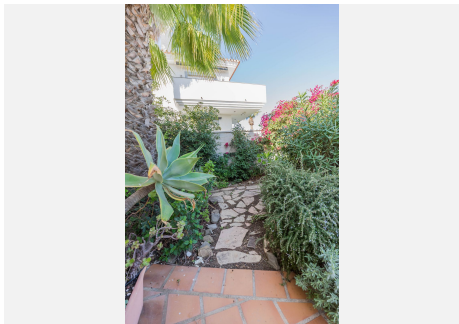
Private garage

Semi-basement level with adaptable space ideal for creating a self-contained apartment, studio, gym, leisure room or workspace



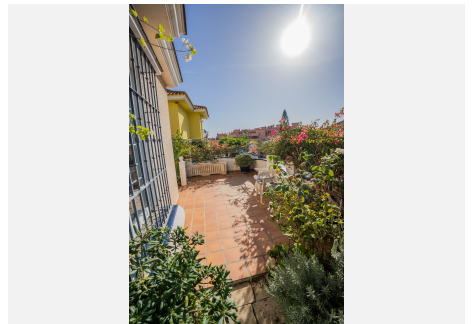
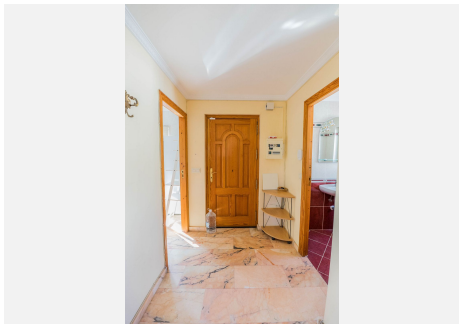
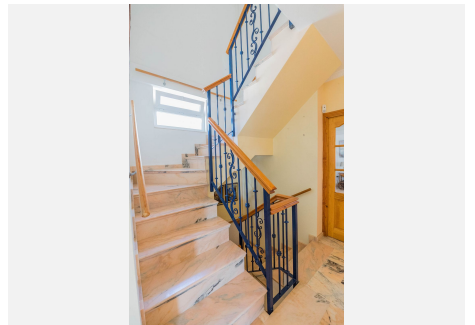
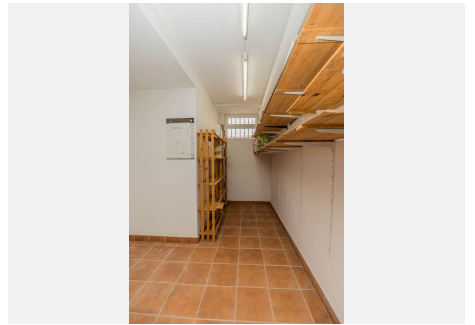
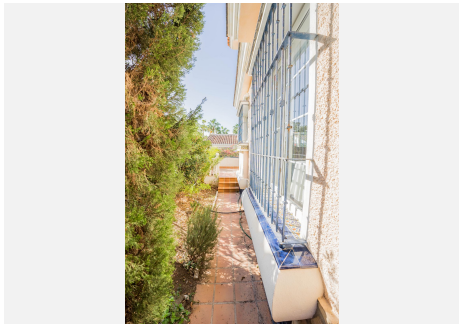
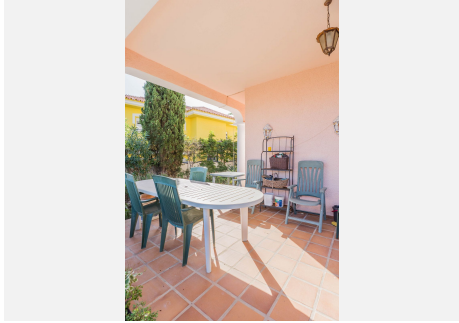
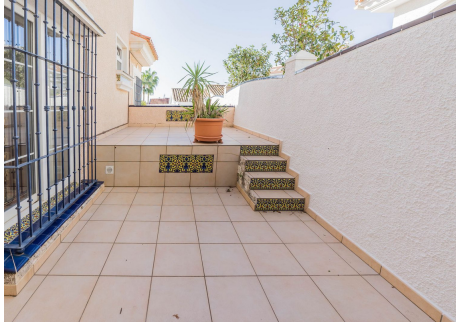
BROMLEY ESTATES

Marbella



BROMLEY ESTATES

Marbella



BROMLEY ESTATES

Marbella

