



PENTHOUSE 2 BEDROOMS 2 BATHROOMS IN ELVIRIA

📍 Elvira

REF# R5226184 €540,000

BEDS

2

BATHS

2

BUILT

156 m²

Discover Your Dream Coastal Retreat in Balcones de La Mairena, Elvira, Marbella

Imagine waking up to panoramic, breathtaking, uninterrupted views of the Mediterranean, stretching from the sun-kissed Costa del Sol all the way to the dramatic shores of Africa and the iconic Rock of Gibraltar. This south-to-southwest-facing penthouse is a luxuriously modern masterpiece of elegance and comfort nestled in serene pine and cork oak forests for ultimate peace and privacy.

Step inside, and you will find the foyer splits into the very spacious kitchen and a larger dining room/living room area, perfect for entertaining or quiet evenings.

The master bedroom has wonderful sea views, built-in wardrobes, and a large en-suite bathroom complete with a shower and bathtub.

The second bedroom also includes built-in wardrobes and an en-suite bathroom with a bathtub.

The living room has sliding glass doors that open to an uncovered, fully glazed terrace with a retractable awning for shade.

Centralised hot/cold air conditioning ensures effortless modern living.

BROMLEY ESTATES

Marbella

A dedicated, uncovered private parking space comes with this penthouse.

The exclusive, well-maintained Balcones de La Mairena boasts lush gardens and a stunning infinity pool overlooking the coast—your private oasis of tranquility.

This is more than a home—it's a lifestyle. Sophisticated. Serene with unrivalled sea views. Perfect for those who demand quality and location without compromise. Your slice of paradise awaits.

Indoor built area: 119m².

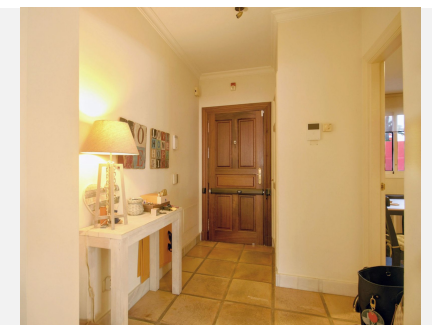
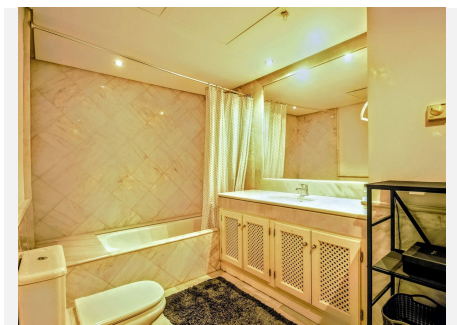
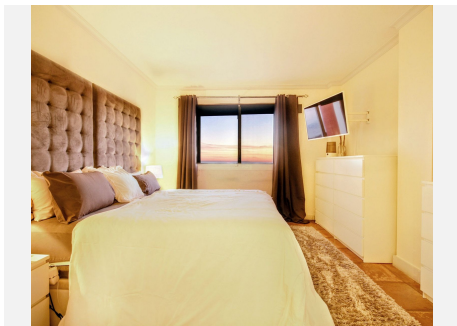
Terrace: 25m².

Parking space: 12m².

Total: 156m².

Community Fees: €228 per month.

IBI Fees: €399 per year.



BROMLEY ESTATES

Marbella

