



HOUSE 4 BEDROOMS 5 BATHROOMS IN TORREMUELLE

📍 Torremuelle

REF# R5226556 €1,150,000

BEDS

4

BATHS

5

BUILT

358 m²

Modern villa with spectacular panoramic views of the Mediterranean, located in one of the most exclusive areas of Benalmádena, next to the Casablanca natural park. In a peaceful setting close to the village, this south-facing, bright property offers spacious terraces, large windows, and a sophisticated design that seamlessly blends indoor and outdoor living. It also features installed solar panels for greater energy efficiency.

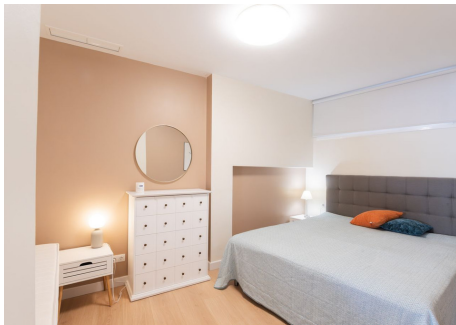
Distributed across three floors connected by a private lift, it includes four en-suite bedrooms, a guest toilet, a fully equipped kitchen, a laundry room, and an additional 40 m² living area on the garden level.

The development offers an elegant social club with a swimming pool, gym, and privileged views of the sea and the bay of Fuengirola.

Excellent location, just 800 meters from the Torremuelle train station and close to all amenities.

BROMLEY ESTATES

Marbella



BROMLEY ESTATES

Marbella

