



MIDDLE FLOOR APARTMENT 2 BEDROOMS 2 BATHROOMS IN LA DUQUESA

📍 La Duquesa

REF# R5227264 €240,000

BEDS

2

BATHS

2

BUILT

65 m²

TERRACE

24 m²

Apartment with sea and mountain views just minutes from the beach, La Duquesa

Located in Manilva Costa, this property sits in a privileged setting that offers both peace and proximity to the main attractions along the coast. Just 500 meters away, you'll find beautiful fine-sand beaches reached by a pleasant pedestrian pathway of about 15 minutes. Two of the area's most renowned marinas are also nearby: the charming La Duquesa Marina, 4 km away, and the exclusive Sotogrande Marina, 6 km away, both known for their lively atmosphere, beachfront bars, restaurants and varied leisure options.

This first-floor apartment, facing southwest, stands out for its bright and inviting ambiance. It features a spacious terrace where you can relax while enjoying open views of the surrounding nature, mountains and the sea. Large sliding doors link the terrace with the living room, creating an open and comfortable space next to the open-plan kitchen. The property offers two bedrooms and two bathrooms, making it suitable both as a full-time home or a holiday retreat.

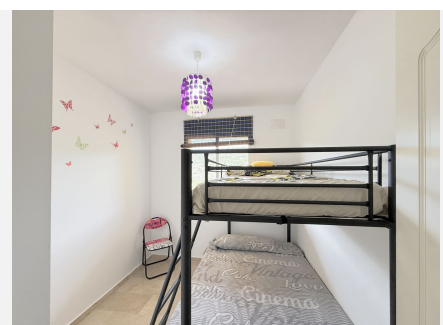
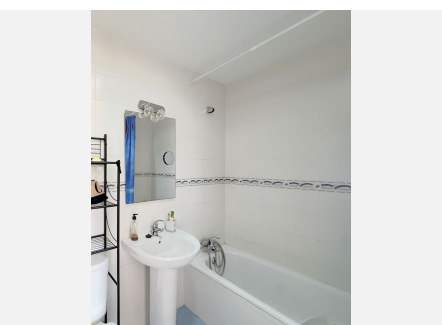
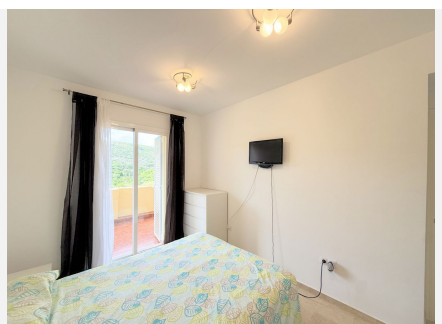
+34 952 939 460 · info@bromleyestatesmarbella.com Urbanizacion El Rosario, CN340, Km 188, Marbella, Malaga 29603

BROMLEY ESTATES

Marbella

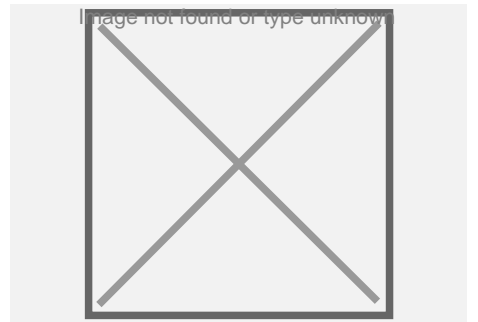
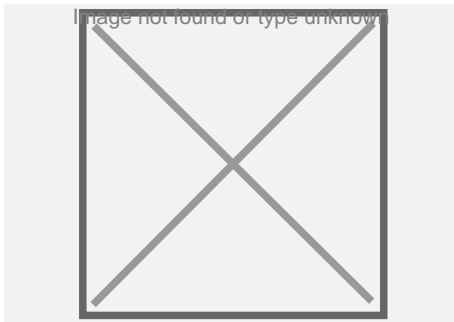
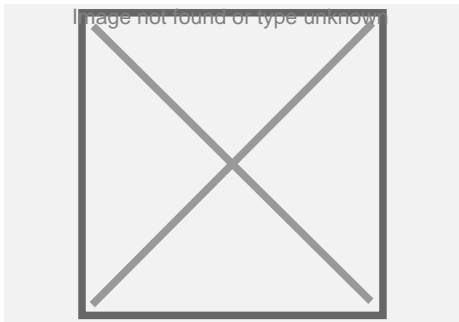
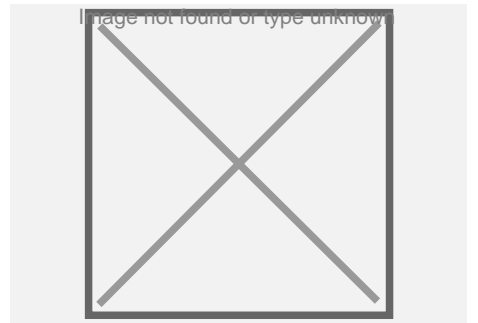
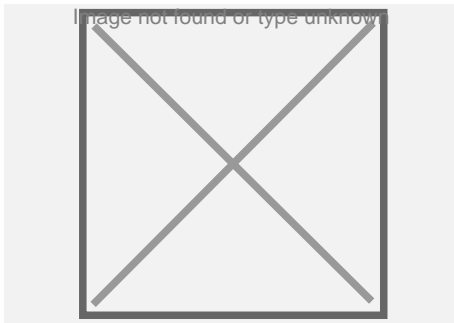
The private residential complex includes a swimming pool for adults, another for children, and has direct access to the path leading to the beach. A parking space and storage room are also included, adding extra convenience.

An excellent opportunity for those seeking tranquility without giving up the advantages of living close to the coast and essential services. A viewing is highly recommended.



BROMLEY ESTATES

Marbella



BROMLEY ESTATES

Marbella

