

BROMLEY ESTATES

Marbella



MIDDLE FLOOR APARTMENT 2 BEDROOMS 2 BATHROOMS IN PUERTO BANÚS

📍 Puerto Banús

REF# R5227303 €850,000

BEDS

2

BATHS

2

BUILT

160 m²

TERRACE

16 m²

Spacious 2-Bedroom Apartment with Potential to Convert into 3 Bedrooms

Embrujo Playa is one of the most well-established and peaceful residential complexes in the beachside area of Puerto Banús. Located just a 5-minute walk from the sea and promenade, it offers lush gardens, two outdoor swimming pools, 24-hour security, and a privileged location close to shops, restaurants, beach clubs, sports centres, and international schools.

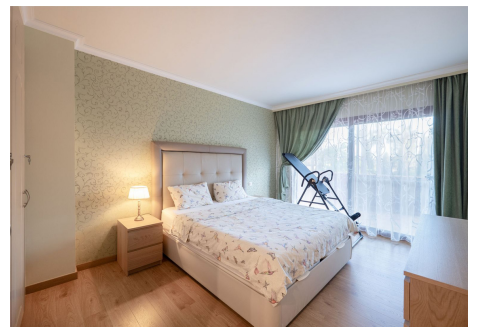
This bright and spacious first floor apartment boasts a total area of approximately 160 m² and enjoys a sunny orientation with open views over the communal gardens and pool. It features a generous living room, a large fully fitted kitchen with dining area, two bedrooms, and two bathrooms. The wide terrace is perfect for relaxing or entertaining outdoors.

One of the key advantages is the potential to convert the layout into a 3-bedroom home without compromising comfort. This makes it a rare find for those seeking a larger-than-average apartment in the
+34 952 939 460 · info@bromleyestatesmarbella.com Urbanizacion El Rosario, CN340, Km 188, Marbella, Malaga 29603

BROMLEY ESTATES

Marbella

heart of the coast. Underground parking and a private storage room are included in the price.



+34 952 939 460 · info@bromleyestatesmarbella.com · Urbanización El Rosario, CN340, Km 188, Marbella, Malaga 29603