



GROUND FLOOR APARTMENT 2 BEDROOMS 2 BATHROOMS IN ESTEPONA

📍 Estepona

REF# R5230369 €485,000

BEDS

2

BATHS

2

BUILT

112 m²

TERRACE

28 m²

Luxurious Garden Retreat in the Prestigious Benatalaya Community

Located in the renowned Benatalaya urbanization—one of Estepona's most private and secure gated communities—this elegant ground-floor residence offers exceptional tranquility. Its corner position and secluded private garden create a peaceful haven surrounded by beautifully landscaped Mediterranean greenery.

The home features two refined bedrooms and two modern bathrooms, with the master suite offering both a bathtub and a walk-in shower. Underfloor heating enhances both bathrooms, and electric shutters ensure comfort and convenience in the bedrooms. The fully equipped kitchen includes a separate utility area, and the property comes with two parking spaces plus a storage room.

BROMLEY ESTATES

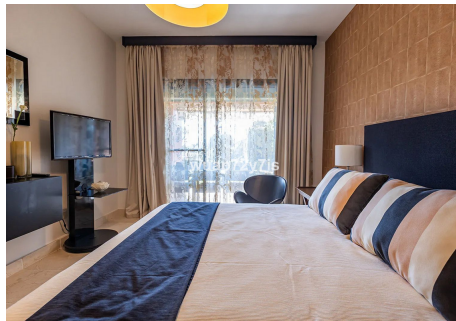
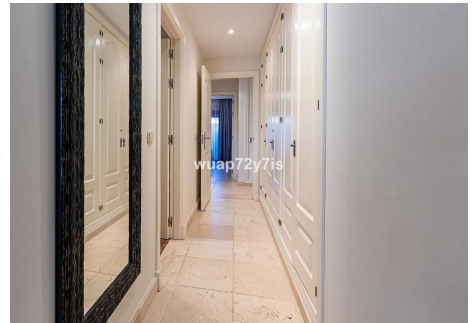
Marbella

Benatalaya is celebrated for its impeccable communal areas, offering four swimming pools—including a heated indoor pool—an on-site gym, and 24-hour security. The serene environment makes it ideal for comfortable year-round living or as a sophisticated holiday escape.

Its strategic location provides excellent connectivity:

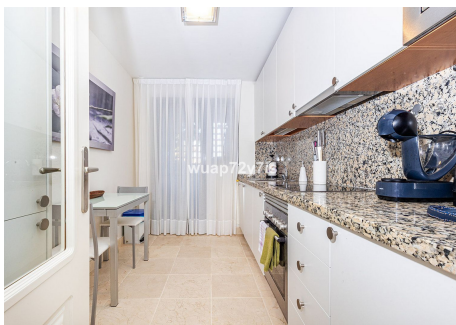
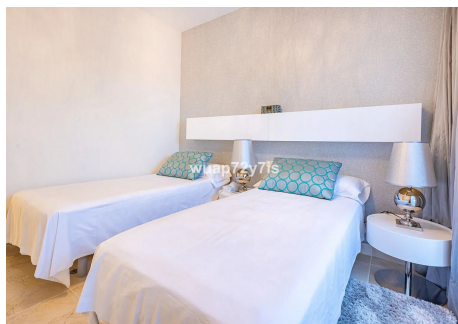
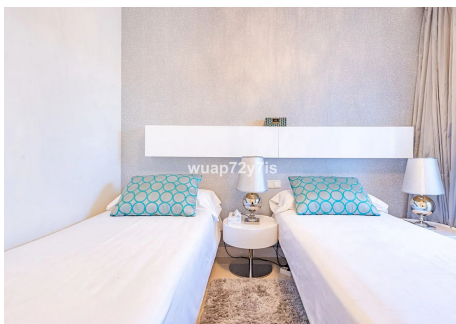
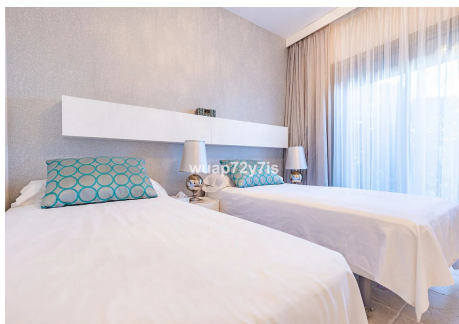
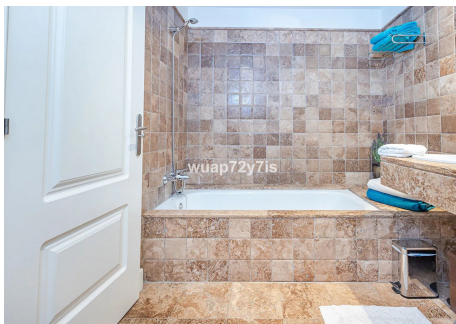
- San Pedro de Alcántara – 7 minutes
- Puerto Banús – 12 minutes
- Estepona – 18 minutes

The charming village of Benahavís, known for its exceptional dining options, is just a short drive away. Atalaya Golf is nearby, and both Atalaya School and a Mercadona supermarket are within walking distance, making this property an excellent choice for families.



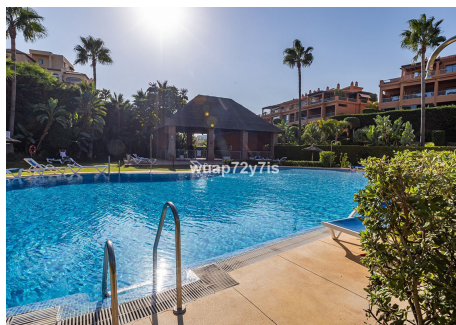
BROMLEY ESTATES

Marbella



BROMLEY ESTATES

Marbella



BROMLEY ESTATES

Marbella

