

BROMLEY ESTATES

Marbella



MIDDLE FLOOR APARTMENT 2 BEDROOMS 2 BATHROOMS IN PUERTO BANÚS

📍 Puerto Banús

REF# R5234464 €799,000

BEDS

2

BATHS

2

BUILT

126 m²

Just a two-minute walk from the beach, this apartment in Medina Garden, Puerto Banus, is the ideal place for a family vacation. This wonderful apartment can accommodate up to 5 people. It offers 2 bedrooms and 2 bathrooms, a well-equipped kitchen with a separate laundry room with a washing machine, a spacious living room, and a large terrace with dining and sitting areas with stunning sea and mountain views. It is not only the incredible views of Gibraltar and the African coast that give this apartment its privileged location, but the amazing views of the "Pueblos Blancos" at night, as their lights spread like a Bethlehem all over the mountains in the area. The southern Spanish climate makes this terrace the perfect place to sit with a glass of wine and some tapas in the evening, enjoy a cozy breakfast or brunch, or just relax with a good book with the sounds of the sea and seagulls in the background. The apartment has two elevators and a convenient underground parking space with direct access to the apartment. It also has central air conditioning.

The apartment is part of a quiet and very well-maintained community with tall subtropical trees and plants, Andalusian-style fountains, a large swimming pool with access to showers and toilets, and even a paddle

+34 952 939 460 · info@bromleyestatesmarbella.com Urbanizacion El Rosario, CN340, Km 188, Marbella, Malaga 29603

BROMLEY ESTATES

Marbella.

tennis court.

It is amazing how this tranquil oasis can be so close to a myriad of amenities, just a stroll away. The Ocean Club (luxury day resort) is just across the street, as well as a walkway to the Puerto Banus boardwalk, which is only a five-minute walk from this Medina Garden apartment. The Marbella Casino is across the road, as well as a large open-air market that brings together hundreds of traders every Saturday. There is easy access to several pharmacies, supermarkets, and stores without the need to take the car. There is also public transportation in the area. The charming Old Town in Marbella centre is only a 10-minute drive away.

Indoor built area: 69m².

Terrace: 25m².

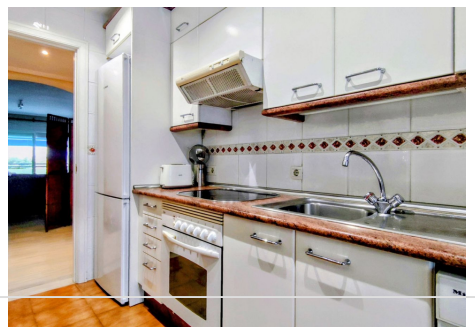
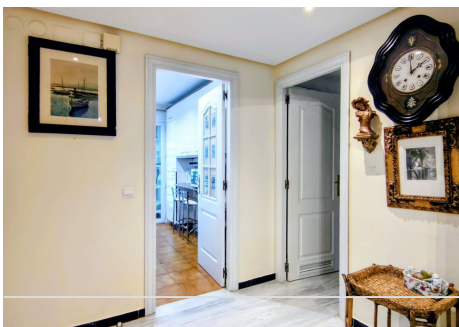
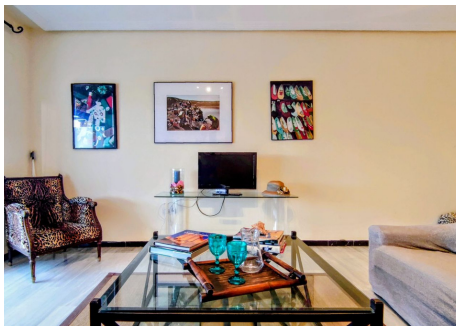
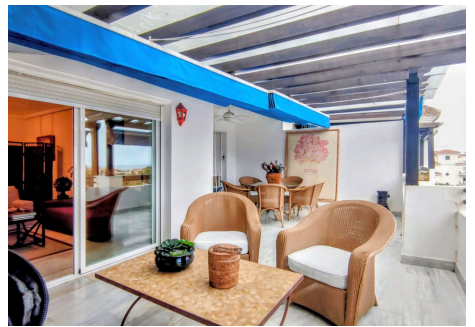
Parking space: 25m².

Storage room: 7m².

Total: 126m².

Community fees: €240 per month.

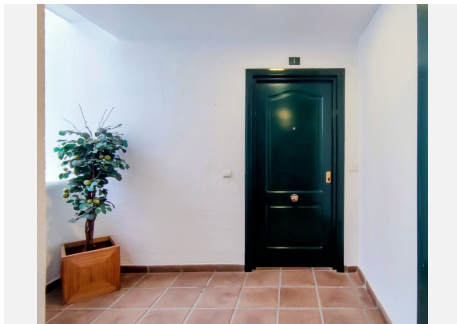
IBI fees: €590 per year.



+34 952 939 460 · info@bromleyestatesmarbella.com Urbanizacion El Rosario, CN340, Km 188, Marbella, Malaga 29603

BROMLEY ESTATES

Marbella



BROMLEY ESTATES

Marbella

