



MIDDLE FLOOR APARTMENT 2 BEDROOMS 2 BATHROOMS IN BENALMADENA PUEBLO

📍 Benalmadena Pueblo

REF# R5236210 €339,000

BEDS

2

BATHS

2

BUILT

72 m²

TERRACE

13 m²

Welcome to this bright and well-designed apartment in the charming Benalmádena Pueblo, a home that offers modern comfort along with one of the most spectacular views in the area. Here, you are greeted by a harmonious atmosphere where natural light flows throughout the residence, creating a warm and inviting ambiance.

The apartment comprises approximately 73 sqm and features two spacious bedrooms and two elegant bathrooms. The functional kitchen is connected to the bright living room, creating an inviting social space ideal for both everyday living and entertaining.

From the living room, you access the lovely 13 sqm terrace, where you can sit back and enjoy a magical sea view, a space that becomes a natural extension of the home and offers peaceful moments from morning to evening.

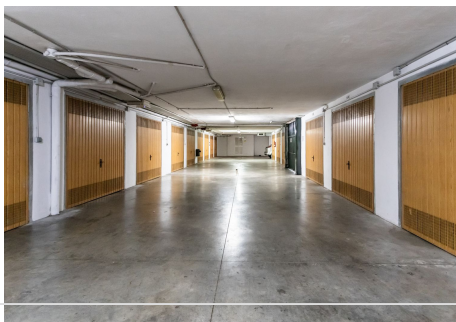
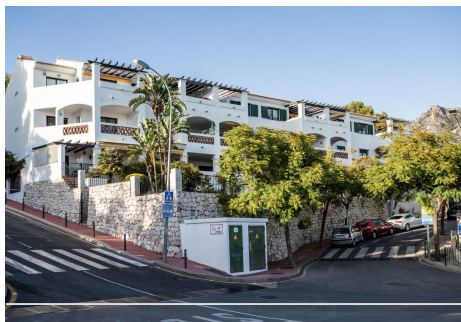
BROMLEY ESTATES

Marbella

The property also includes a closed and spacious garage, providing secure and convenient storage for your car. The community features a shared pool, perfect for refreshing dips and relaxation on sunny days.

This home is ideal for those seeking a tranquil environment close to the picturesque center of Benalmádena Pueblo, filled with restaurants and cafés, while also enjoying exceptional views and an outstanding quality of life.

Contact us for more information!



+34 952 939 460 · info@bromleyestatesmarbella.com Urbanizacion El Rosario, CN340, Km 188, Marbella, Malaga 29603

BROMLEY ESTATES

Marbella

