



GROUND FLOOR APARTMENT 2 BEDROOMS 2 BATHROOMS IN BENAHAVIS

📍 Benahavis

REF# R5243764 €365,000

BEDS

2

BATHS

2

BUILT

102 m²

TERRACE

43 m²

Modern 2-Bed, 2-Bath Apartment on the Edge of El Paraíso Golf

Experience breathtaking panoramic views of La Concha Mountain and the El Paraíso Golf course from this stylish apartment.

This property combines the comfort and independence of an apartment with the luxury of resort-style amenities. Enjoy access to multiple swimming pools, lush landscaped gardens, a co-working space, and a fully equipped professional gym.

Nestled on the edge of El Paraíso Golf and close to Villa Padierna, Tramores, Atalaya, and Guadalmina golf courses, the resort boasts a prime location at the crossroads of Marbella, Estepona, and Benahavís. You'll be just minutes from stunning beaches, world-class golf, and a wide range of coastal activities.

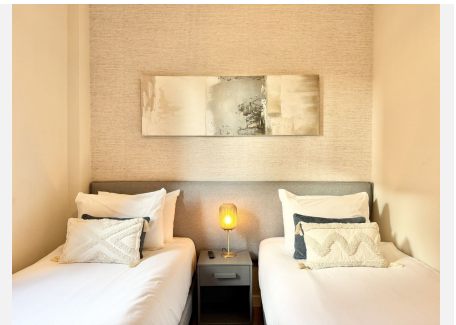
The resort's rental program makes ownership effortless, offering a fully serviced experience while providing excellent rental income potential.

We are delighted to offer a limited selection of units, with prices ranging from €245,000 to €449,000. Contact us today for more details.

+34 952 939 460 · info@bromleyestatesmarbella.com Urbanizacion El Rosario, CN340, Km 188, Marbella, Malaga 29603

BROMLEY ESTATES

Marbella



BROMLEY ESTATES

Marbella

