



## PENTHOUSE 3 BEDROOMS 2 BATHROOMS IN SAN PEDRO DE ALCANTARA

📍 San Pedro de Alcántara

REF# R5252083 €1,175,000

BEDS

3

BATHS

2

BUILT

114 m<sup>2</sup>

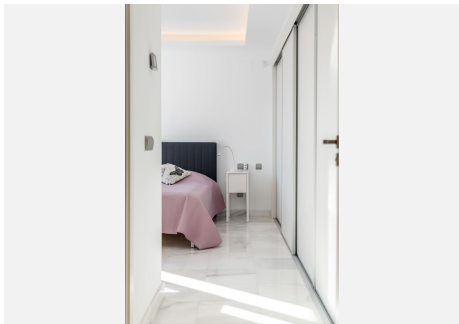
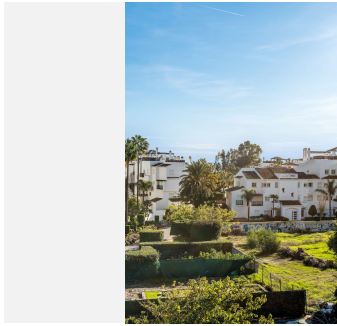
TERRACE

96 m<sup>2</sup>

Jade Beach is a modern residential complex in San Pedro de Alcántara, built by Taylor Wimpey in 2016. The property is a corner penthouse with three bedrooms and two bathrooms, featuring a spacious terrace on the main floor and a private rooftop terrace with a jacuzzi. The complex offers a communal swimming pool, landscaped gardens, two parking spaces, and one storage room. It is located within walking distance to the beach, the town centre of San Pedro, and the NAC padel club. The apartment enjoys views over the pool, garden, and surrounding mountains. As one of the few new developments in the San Pedro beachside area, Jade Beach provides contemporary living in a prime location, just a short walk from all amenities.

# BROMLEY ESTATES

## *Marbella*





# BROMLEY ESTATES

## *Marbella*

