



SEMI-DETACHED HOUSE 4 BEDROOMS 4 BATHROOMS IN NUEVA ANDALUCIA

📍 Nueva Andalucia

REF# R5253085 €2,395,000

BEDS	BATHS	BUILT	PLOT	TERRACE
4	4	300 m²	334 m²	67 m²

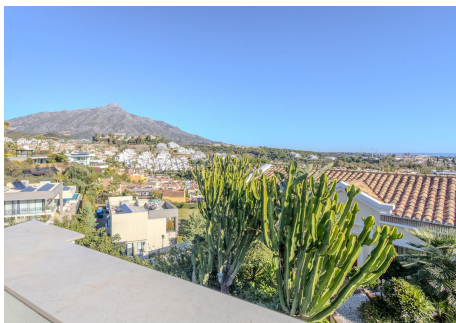
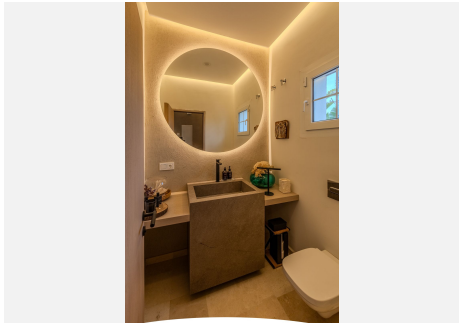
Elegant View Residence in La Cerquilla, Nueva Andalucía Located in the prestigious and secure gated community of Aldea Dorada, this semi-detached residence offers the ease of a townhouse with the elevated presence of a penthouse, set in one of Nueva Andalucía's most exclusive and tranquil locations. From its privileged position, the property enjoys exceptional panoramic views across the Mediterranean Sea, the Golf Valley, and the iconic La Concha Mountain—widely considered among the finest views in Nueva Andalucía and the defining feature of the home. Behind a classic Andalusian façade, the interior reveals a warm and refined Japandi-style renovation, featuring high ceilings, open-plan living spaces, and modern bathrooms that create a calm and elegant atmosphere. The entrance level offers an open living and dining area with a striking suspended fireplace, a discreet office space, and direct access to a partly covered terrace designed to fully embrace the views. The home offers 300 m² built, 76 m² of terraces, and a 300 m² private garden with avocado, mango, and passion fruit trees. A plunge pool on the upper terrace delivers a true penthouse-style outdoor experience. The property comprises four bedrooms and three bathrooms, with excellent potential to create a luxurious master suite with walk-in wardrobe and en-suite bathroom. Additional features

+34 952 939 460 · info@bromleyestatesmarbella.com Urbanizacion El Rosario, CN340, Km 188, Marbella, Malaga 29603

BROMLEY ESTATES

Marbella

include a private gym, two large storage rooms, covered parking for two cars, and lower-level terraces with direct access to the garden. A rare opportunity for buyers seeking a secure, semi-detached luxury home with breathtaking views and effortless maintenance.



BROMLEY ESTATES

Marbella

