



RESIDENTIAL PLOT BEDROOMS BATHROOMS IN BENAHAVIS

📍 Benahavis

REF# R5253751 €299,000

BEDS

BATHS

BUILT

m²

PLOT

2870 m²

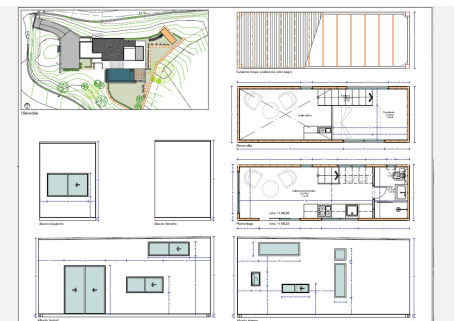
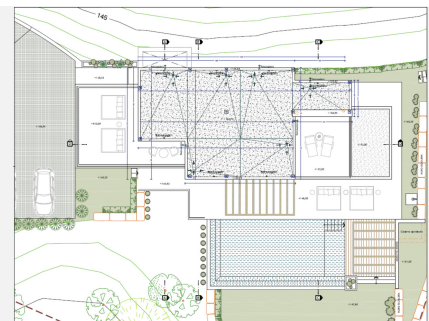
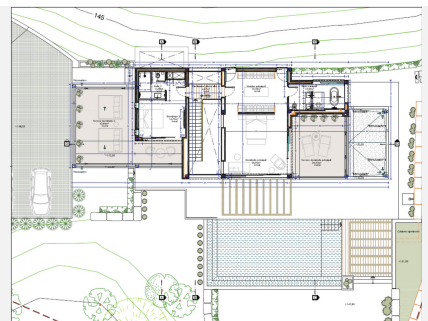
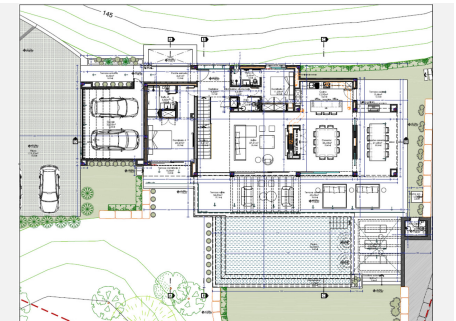
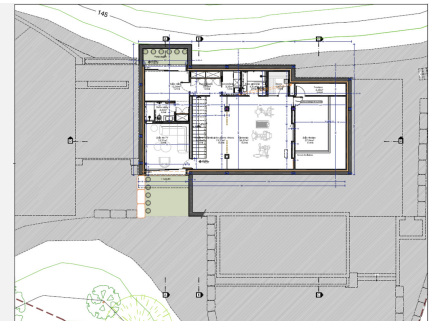
Residential plot in Montemayor, introducing a unique opportunity in an exclusive setting. Located atop the hills of Benahavis, within the natural enclave of the Montemayor Valley, plot A16, is a private sanctuary, a blank canvas to create the home of your dreams. A natural paradise bathed in the warm southern sun, where a lush forest, majestic mountains, a serene lake, and the vast sea intertwine in an unparalleled spectacle. This 2,870 square meter plot, located in the prestigious Montemayor development, invites you to explore endless possibilities. With a maximum building capacity of 366 square meters, this space offers the freedom to build a customized oasis, tailored to your needs. Adjacent to it, you will find top-notch tennis courts and golf courses, along with the most exclusive clubs, making this place a landmark in southern Spain for those seeking to indulge in life to the fullest. Benahavis is both a city and a municipality in the province of Malaga, ideally located just 7 km from the coast and about a 20-minute drive from Marbella. An authentic Andalusian village nestled in a picturesque valley surrounded by spectacular mountains, and is especially popular among nature and gastronomy enthusiasts. Home to many luxury communities, the municipality of Benahavis spans 145 square kilometers and is well-connected to Malaga via the A7 and AP7

+34 952 939 460 · info@bromleyestatesmarbella.com Urbanizacion El Rosario, CN340, Km 188, Marbella, Malaga 29603

BROMLEY ESTATES

Marbella

highways. Malaga Airport is located 71 km from the village, while Gibraltar Airport is 70 km away, with both journeys taking approximately 60 minutes. Don't miss the opportunity to turn this vision into your reality. Welcome to your future home in Montemayor!



BROMLEY ESTATES

Marbella

