



## RESIDENTIAL PLOT BEDROOMS BATHROOMS IN BENAHAVIS

📍 Benahavis

REF# R5257075 €495,000

BEDS

BATHS

BUILT

m<sup>2</sup>

PLOT

3473 m<sup>2</sup>

### MONTE MAYOR – LARGE SOUTH-FACING PLOT WITH PANORAMIC SEA VIEWS

Impressive south-facing 3,473 m<sup>2</sup> plot located within the prestigious gated community of Monte Mayor, offering panoramic sea views and excellent natural light throughout the day.

The plot benefits from 12.2% buildability, allowing for a maximum construction of 423.70 m<sup>2</sup>, ideal for a substantial contemporary luxury villa. A fully designed villa project by an architect is already in place, with detailed plans and high-quality renders included, enabling a swift and efficient start to construction.

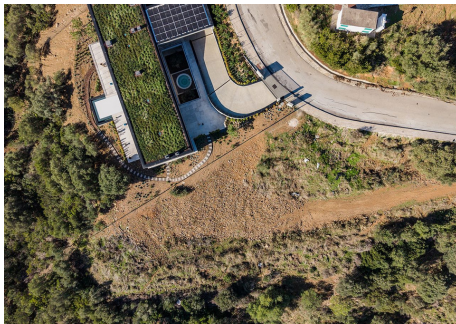
Set in a private natural environment yet within easy reach of the coast, golf courses and amenities, this is a rare opportunity to secure a premium, ready-to-build plot in one of the Costa del Sol's most exclusive hillside locations.



# BROMLEY ESTATES

*Marbella*

Located within the municipality of Benahavís, whose town hall is well known for being efficient, responsive, and straightforward to work with when issuing building licences, this plot offers a smoother and faster development process compared to many neighbouring areas. A superb opportunity to develop a standout luxury villa in an exceptional setting.



# BROMLEY ESTATES

*Marbella*

---

