



PENTHOUSE APARTMENT 2 BEDROOMS 1 BATHROOM IN BENALMADENA COSTA

📍 Benalmadena Costa

REF# R5264860 €249,500

BEDS

2

BATHS

1

BUILT

55 m²

TERRACE

10 m²

Welcome to this small, compact yet very well-planned apartment located on the top floor in attractive Benalmádena Costa. Here you can enjoy stunning, unobstructed sea views that create a wonderful sense of space and light.

Despite its efficient size, the apartment offers a smart layout that makes the most of every square metre. The location is hard to beat – approximately a 15-minute walk to the beach, the marina, and the train station, with direct train access to Málaga Airport in around 15 minutes.

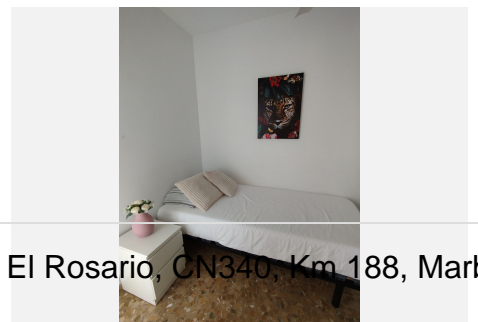
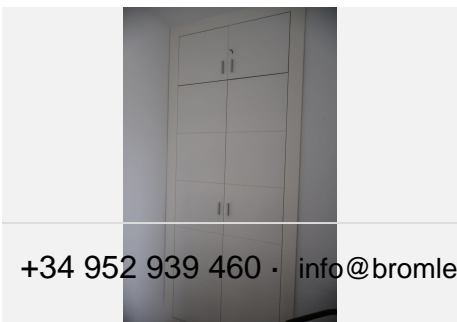
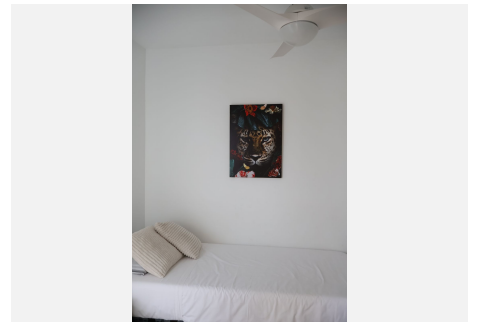
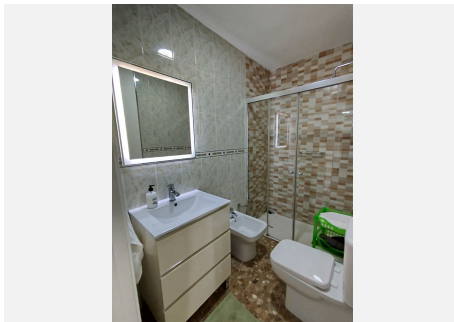
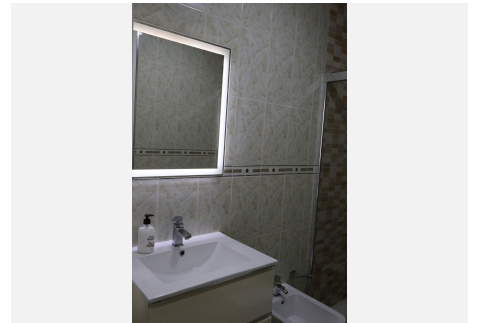
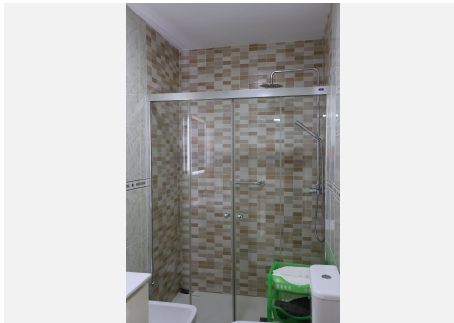
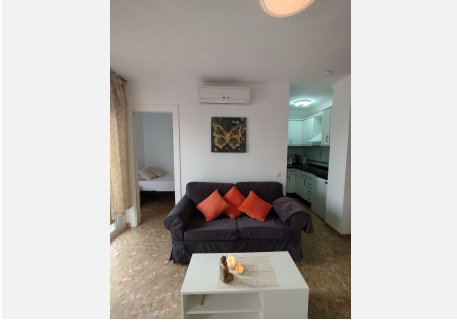
Everything you need is within easy walking distance, including Bonanza Square, Parque de la Paloma, restaurants, shops, services, and public transport.

The apartment does not currently have a tourist licence; however, the community allows holiday rentals for those who wish to apply, making this an attractive option also as an investment.

BROMLEY ESTATES

Marbella

A perfect property as a holiday home, pied-à-terre, or smart investment on the Costa del Sol.



+34 952 939 460 · info@bromleyestatesmarbella.com · Urbanizacion El Rosario, CN340, Km 188, Marbella, Malaga 29603

BROMLEY ESTATES

Marbella

