

BROMLEY ESTATES

Marbella



MIDDLE FLOOR APARTMENT 2 BEDROOMS 2 BATHROOMS IN ESTEPONA

📍 Estepona

REF# R5265280 €565,000

BEDS

2

BATHS

2

BUILT

97 m²

TERRACE

15 m²

Modern 2-Bed Apartment in Las Mesas with Sea Views & Tourist License

Experience the best of Estepona living in this stunning, move-in-ready apartment located in the prestigious Las Mesas area. Completed in 2024, this contemporary home offers 82m² of bright interior living space complemented by a 15m² private terrace (108m² total built area). Sold fully furnished and including a valuable tourist license, it is an ideal high-yield investment or luxury holiday retreat.

Property Highlights:

- Space & Layout: Efficiently designed with 82m² usable interior space, featuring a master en-suite and high-end finishes throughout.
- Outdoor Living: 15m² private terrace with mountain, park, and lateral sea views—perfect for sunset dining.

+34 952 939 460 · info@bromleyestatesmarbella.com Urbanizacion El Rosario, CN340, Km 188, Marbella, Malaga 29603

BROMLEY ESTATES

Marbella

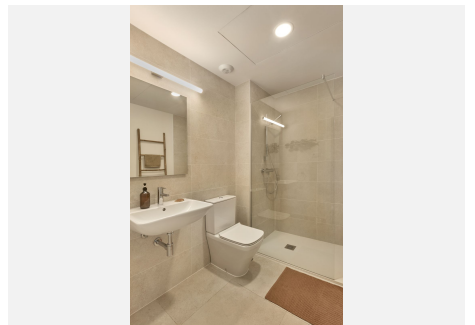
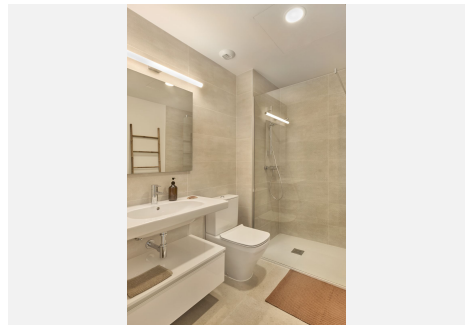
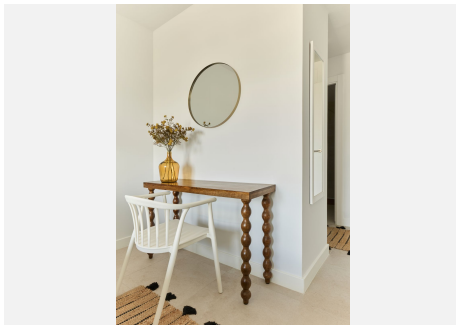
- Prime Location: Just a 10-minute walk to Estepona Port, beaches, and local amenities.
- Turnkey Ready: Stylishly furnished and ready for immediate occupation or rental.
- Premium Facilities: Access to a modern communal pool and fully equipped gym.

Extras Included:

- Private underground parking and a dedicated storage room.
- Full elevator access and fitted wardrobes in both bedrooms.

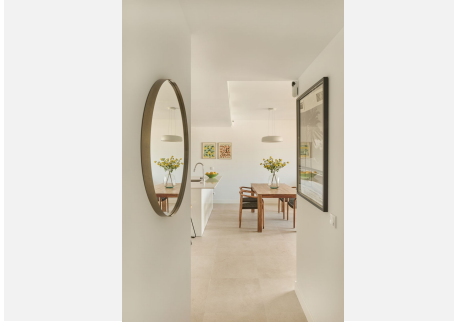
Investment Potential:

This middle-floor gem in a sought-after modern development offers unmatched value on the Costa del Sol. Whether you are looking for a permanent residence or a profitable rental, the combination of the 2024 build quality and the included tourist license makes this a standout opportunity in Estepona.



BROMLEY ESTATES

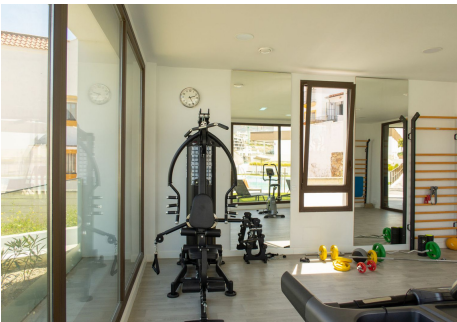
Marbella



MESAS HOMES II
FAMILIA II-DEL SECTOR SUP-4
ESTADIA MALAGA

IMP. UTE.	EXTIMP.
Superficie Construida	100,00 m ²
Superficie Útil	100,00 m ²
Superficie Cubierta	100,00 m ²
Superficie Puesta	100,00 m ²
Superficie Total	100,00 m ²

Sección de planta
Sección de fachada
Sección de alzado



BROMLEY ESTATES

Marbella

