



PENTHOUSE DUPLEX 3 BEDROOMS 3 BATHROOMS IN BENALMADENA

📍 Benalmadena

REF# R5265943 €695,000

BEDS

3

BATHS

3

BUILT

152 m²

This home offers breathtaking panoramic views stretching across Benalmádena to the Mediterranean Sea. This luxurious property features a spectacular private rooftop terrace and a relaxing jacuzzi—the perfect setting to immerse yourself in the Mediterranean sun and lifestyle.

The apartment is distributed over two levels and comprises three spacious bedrooms and three well-appointed bathrooms. All bedrooms include integrated wardrobes. The lower level features an open-concept living area and a highly functional kitchen, allowing you to prepare meals while overlooking the sea. A practical utility room is located discreetly at the rear of the kitchen. The home's convenience is further enhanced by a comprehensive water purification system that protects the lifespan of the appliances, complemented by an additional filtration system for pure drinking water.

Also on the lower level is the master suite, which boasts its own en-suite bathroom and magnificent sea views, alongside a second bedroom and bathroom. This floor also hosts a generously sized terrace with

+34 952 939 460 · info@bromleyestatesmarbella.com Urbanizacion El Rosario, CN340, Km 188, Marbella, Malaga 29603

BROMLEY ESTATES

Marbella

ample room for an outdoor dining set and comfortable lounge seating. The upper level contains a third bedroom and bathroom, with direct access to a large terrace featuring the jacuzzi. During the construction phase, provisions were made for a rooftop sauna, offering a unique opportunity to create a private wellness space with a sea view. The expansive terrace areas provide an exceptional environment for seamless indoor-outdoor living.

Year-round comfort is ensured by an efficient aerothermal system and water-circulating underfloor heating throughout the entire residence. These modern amenities offer superior climate control and significant energy savings compared to traditional heating methods.

This penthouse is situated in the prestigious and tranquil Las Rocas Blancas area of Benalmádena, conveniently located near all essential services. Benalmádena Pueblo is within walking distance, offering excellent restaurants, local butchers and fishmongers, a bakery, a post office, and the authentic charm of a vibrant Andalusian village. Benalmádena Golf is adjacent to the property, while supermarkets are just a few minutes' drive away. Málaga Airport is reachable in just over 10 minutes, and the town of Arroyo de la Miel is only a few kilometers away.

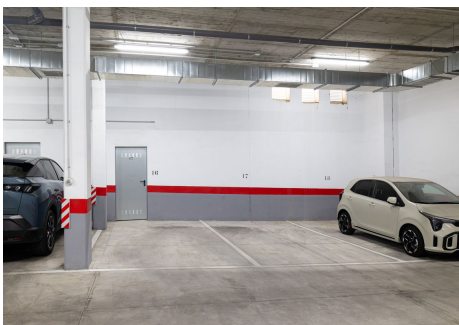
The property includes two private garage spaces and a large, split-level storage unit, providing significant added value. Residents also enjoy access to the community's expansive swimming pool, private padel court, and gym. This is a truly complete residence where every detail has been considered.

Interested? Contact us today for more information or to arrange a viewing.



BROMLEY ESTATES

Marbella



BROMLEY ESTATES

Marbella

