



MIDDLE FLOOR APARTMENT 2 BEDROOMS 2 BATHROOMS IN ESTEPONA

📍 Estepona

REF# R5288269 €585,000

BEDS

2

BATHS

2

BUILT

98 m²

TERRACE

34 m²

This apartment is located in the Marqués de Guadalmina residential complex, a modern development recently built (2020) that combines a privileged and tranquil location with easy access to all kinds of amenities, including supermarkets, schools, beach, city, and mountains. It also offers modern finishes and resort-style services such as a gym, sauna, paddle tennis court, and meticulously maintained communal areas, creating a comfortable, functional, and pleasant residential environment.

The property, situated on the first floor with elevator access, features two bedrooms with built-in wardrobes and en-suite bathrooms, providing privacy and comfort for both residents and guests. The spacious and bright living-dining room connects with the outdoors, while the separate kitchen adds functionality and order to daily life. The apartment boasts two terraces, ideal for relaxing, dining al fresco, or enjoying the natural surroundings that characterize the complex.

BROMLEY ESTATES

Marbella

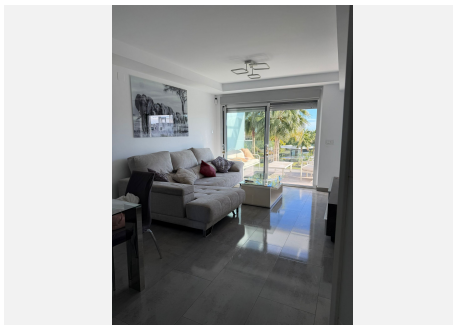
Notable features include a home automation system, alarm, motion detectors, and hot-cold air conditioning, ensuring comfort, efficiency, and security throughout the year.

The property also includes two parking spaces and a large storage room, adding extra convenience and storage capacity.

The gated and video-monitored residential complex offers a wide range of high-level amenities designed for all ages. It features several adult swimming pools, children's pools, a playground, paddle tennis court, putting green, extensive landscaped gardens, and a comprehensive wellness area with gym, sauna, Turkish bath, and jacuzzi. All of this is set in an environment reminiscent of a botanical garden, with palm trees, flowers, birds, and a constant sense of tranquility.

Located in the Atalaya area, just a short walk from the renowned Atalaya International School and very close to a premium Mercadona supermarket, the location is especially convenient for families. It is a quiet residential area, free from crowds and tourism, surrounded by nature and offering a serene and safe atmosphere. Additionally, the property is close to golf courses, just minutes from the beach, and has excellent connections to Puerto Banús, which can be reached in approximately 10 minutes.

This is an ideal home for those seeking comfort, nature, and quality of life, in a community designed for everyday living and enjoyment, away from noise and tourism, yet close to all essential services.



+34 952 939 460 • info@bromleyestatesmarbella.com • Urbanizacion El Rosario, CN340, Km 188, Marbella, Malaga 29603

BROMLEY ESTATES

Marbella

