



## PENTHOUSE 3 BEDROOMS 2.5 BATHROOMS IN BENALMADENA

📍 Benalmadena

REF# R5288599 €1,350,000

BEDS

3

BATHS

2.5

BUILT

138 m<sup>2</sup>

TERRACE

152 m<sup>2</sup>

### CORNER PENTHOUSE WITH PANORAMIC SEA VIEWS – BENALMÁDENA

A rare corner penthouse designed for the Costa del Sol lifestyle — sea views from every window, exceptional outdoor living and a peaceful setting just a short walk from Carvajal Beach, the promenade and its beachfront restaurants.

The home offers a superb main terrace plus a standout rooftop solarium with a private jacuzzi, creating a true “outdoor villa” feel above the coastline.

Size & outdoor living

Built: 138 m<sup>2</sup> | Interior usable: 122 m<sup>2</sup>

Main terrace: 42 m<sup>2</sup> | Rooftop solarium: 110 m<sup>2</sup>

Total outdoor area: 152 m<sup>2</sup> | Total size: 290 m<sup>2</sup>

# BROMLEY ESTATES

## *Marbella*

3 bedrooms | 2 bathrooms + guest toilet

Why this home stands out

Corner position with more natural light, added privacy and an open, airy feel

Sea views from every window

Bright, modern interior with large windows and high-quality finishes

Open-plan living and kitchen flowing seamlessly onto the main terrace

Private lift access from the garage directly into the apartment, and onward to the private rooftop terrace

Rooftop solarium for relaxing and entertaining, featuring a private jacuzzi and panoramic views

High-quality modern community completed in 2022

Community & amenities

Spectacular infinity pool with fantastic views over the Mediterranean

Fully equipped gym with sea views

2 parking spaces + 1 storage room

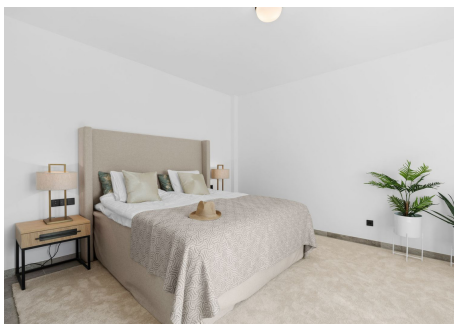
Easy access to Fuengirola and Benalmádena

Location – Carvajal Beach on your doorstep

Approximately 600 m to Carvajal Beach and the seafront promenade — ideal for morning swims, long lunches and sunset dinners at the local chiringuitos, while still enjoying a calm position above the coastline.

Contact us for a viewing and the full listing pack.

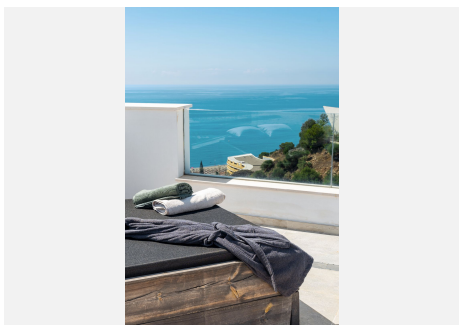
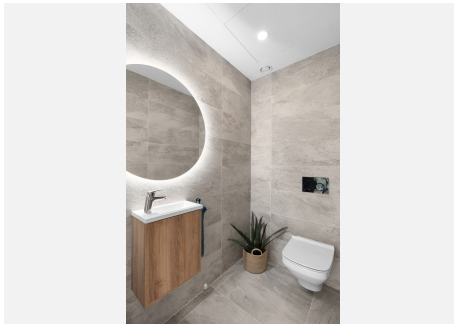
Areas are approximate and provided by the owner/developer.





# BROMLEY ESTATES

## *Marbella*



# BROMLEY ESTATES

## *Marbella*

