



SEMI-DETACHED HOUSE 3 BEDROOMS 2 BATHROOMS IN GUADALMINA ALTA

📍 Guadalmina Alta

REF# R5291851 €695,000

BEDS

3

BATHS

2

BUILT

187 m²

PLOT

266 m²

TERRACE

38 m²

This bright and beautiful townhouse represents an excellent opportunity to live frontline to a prestigious golf course, while enjoying open views to the backdrop of La Concha mountain. Within the select development of El Palmeral de Guadalmina this really charming 3-bedroom townhouse is located in the heart of Guadalmina Alta. Opening out to the Guadalmina North Golf course with open views on to the golf course, the property enjoys an enviable location within the exclusive neighbourhood of Guadalmina, west of Marbella. Offering beach, golf, beachfront restaurants, shops and amenities, this beautiful area has long been considered one of the best neighbourhoods along the Coast.

This townhouse has over 180m² of light, bright living space including 48m² of terraces. The light L-shaped lounge, with fireplace, extends to a private terrace and enjoys full views of the golf course and mountain backdrop. The fully-fitted kitchen is also very spacious. The ground floor also features a guest bathroom, and from this floor you step out onto the large terrace and private garden that is adjacent to the communal pool.

+34 952 939 460 · info@bromleyestatesmarbella.com Urbanizacion El Rosario, CN340, Km 188, Marbella, Malaga 29603

BROMLEY ESTATES

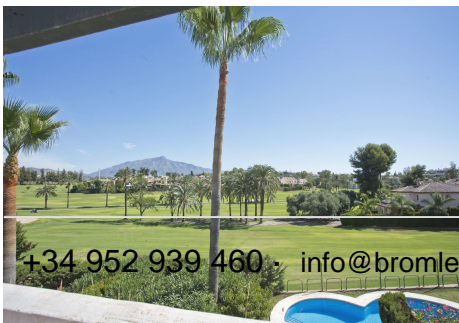
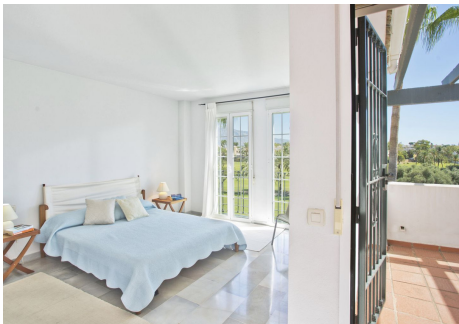
Marbella

This property is built over 3 floors, including a basement that is currently used as a storage space, but which could be converted to an extra bedroom, home gym or studio.

On the first floor you will find all 3 bedrooms, featuring clean, understated interior design. The Master bedroom includes a stylish bathroom en-suite and fitted wardrobes. Complete with a private terrace, this townhouse enjoys wonderful views overlooking the golf course & La Concha mountain. The 2 guest bedrooms share a bathroom.

The exclusive area of Guadalmina borders the beach, and golf course, as well as having a good commercial centre with individual décor stores, boutiques, restaurants, cafés and a host of amenities. Great restaurants in Guadalmina include El Asador, Mai Fusion, El Pescador, Koh Thai, while the large decor emporium La Fabrica de Hielo is a treasure trove of unique items for the home.

This property is located next to San Pedro de Alcántara to the west is Guadalmina, the long-established preferred holiday home destination of Spanish high society. Gradually developing with old-school style since the 1930s, classic villas in large, private gardens now live comfortably alongside village-style developments, striking modern villas and attractive townhouses. Close to the beach, golf, sports facilities, the long seafront promenade of San Pedro and a short drive to the white village of Benahavis, this area is enduringly popular, and this property must be viewed.



+34 952 939 460 - info@bromleyestatesmarbella.com Urbanización El Rosario, CN340, Km 188, Marbella, Malaga 29603

BROMLEY ESTATES

Marbella

