

SEMI-DETACHED HOUSE 3 BEDROOMS 2 BATHROOMS IN BENALMADENA PUEBLO

📍 Benalmadena Pueblo

REF# R5292487 €799,000

BEDS

3

BATHS

2

BUILT

285 m²

PLOT

467 m²

TERRACE

104 m²

Nestled in the charming heart of Benalmádena Pueblo, this elegant 285 m² semi-detached house blends comfort, space, and unforgettable views.

Step into a warm living room with a cozy fireplace, a bright dining area, and a spacious kitchen—perfect for family life and entertaining. There are on the top floor three comfortable bedrooms with wardrobes from ceiling to floor, two spacious bathrooms and terrace, and on the first floor additionally a guest toilet.

The home offers exceptional outdoor living: two spacious terraces, a big patio, and a 110 m² private garden. Relax by your private pool while admiring serene mountain views and Castillo Colomares. Enjoy the sea view from the front terrace and bedroom.

Additional features include a large multifunctional basement with natural light, big laundry room, storage room and a carport for two cars.

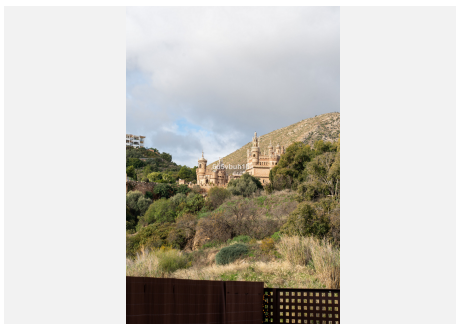
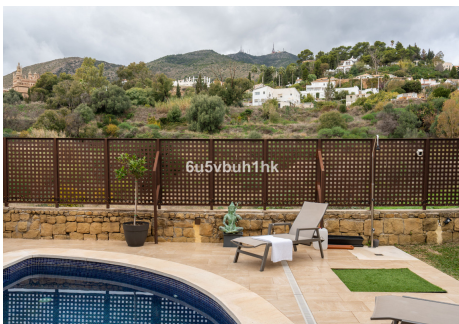
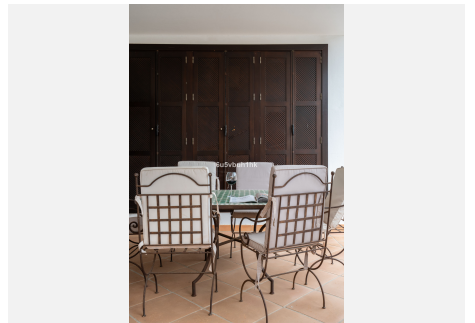
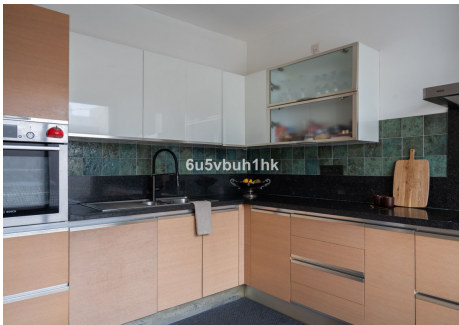
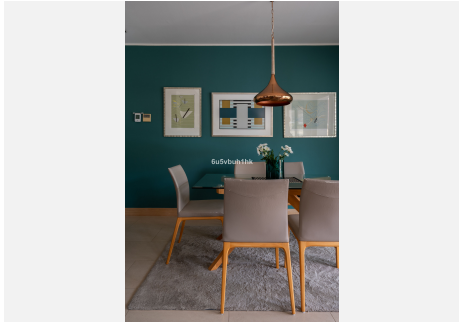
+34 952 939 460 · info@bromleyestatesmarbella.com Urbanizacion El Rosario, CN340, Km 188, Marbella, Malaga 29603

BROMLEY ESTATES

Marbella

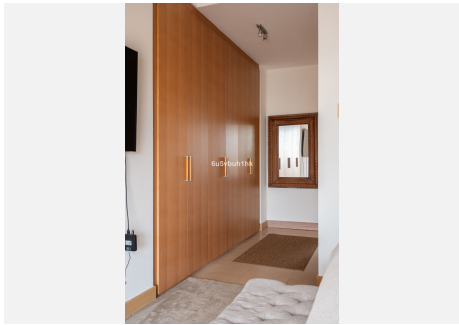
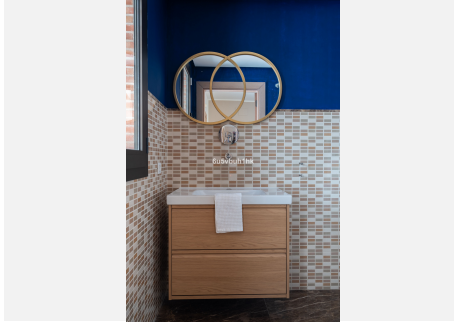
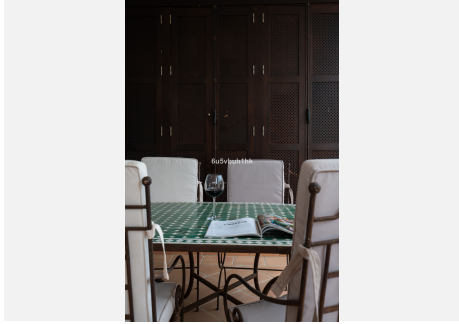
A beautiful blend of tranquility, style, and Andalusian charm—the house is waiting for new owners.

A home that truly has it all. Contact us for a viewing!



BROMLEY ESTATES

Marbella



BROMLEY ESTATES

Marbella

