



## DUPLEX 3 BEDROOMS 3 BATHROOMS IN BENALMADENA

📍 Benalmadena

REF# R5293135 €375,000

BEDS

3

BATHS

3

BUILT

99 m<sup>2</sup>

PLOT

70 m<sup>2</sup>

TERRACE

20 m<sup>2</sup>

High-potential property in a prime location in Benalmádena – Duplex ground floor with terrace and rear garden

Duplex townhouse in an excellent location within the Solymar residential area. The property features a terrace and a rear garden and offers multiple possibilities for renovation and extension – ideal for buyers with vision.

### Description

This duplex groundfloor is located in a highly sought-after area of Benalmádena and stands out for its strong development potential.

The property is arranged over two levels and offers a total built area of approximately 97m<sup>2</sup> according to the Land Registry. The living space is complemented by a terrace and a rear garden, providing various

+34 952 939 460 · info@bromleyestatesmarbella.com Urbanizacion El Rosario, CN340, Km 188, Marbella, Malaga 29603

# BROMLEY ESTATES

*Marbella*

opportunities for extension and redesign.

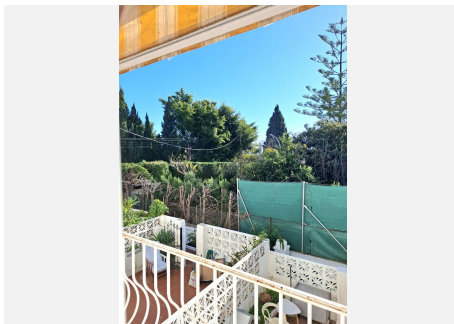
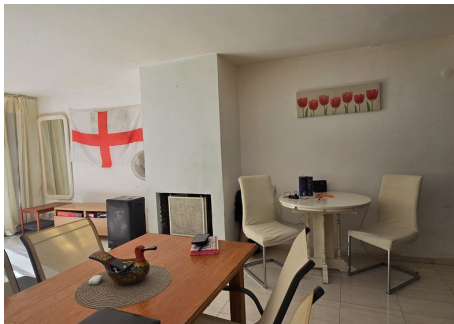
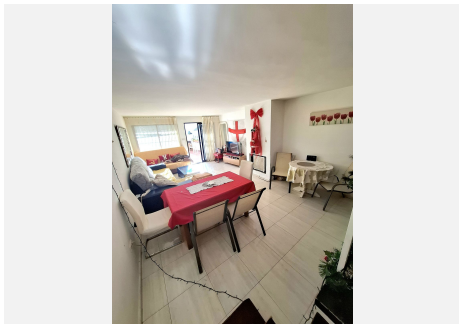
Possible improvement options include:

- Extending the living area by incorporating the terrace
- Enlarging individual rooms
- Creating a winter garden or additional living space in the rear garden
- A full renovation tailored to personal preferences

Images of a renovated neighboring property within the same residential complex are included as a visual reference only. These images do not reflect the current condition of the property offered.

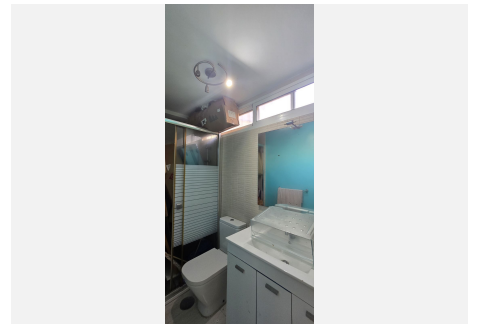
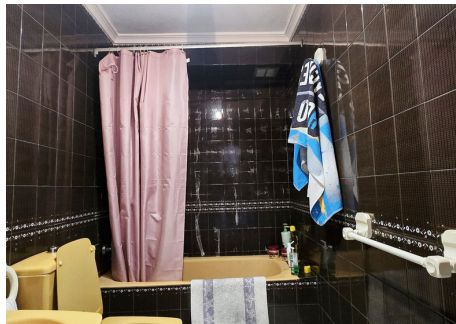
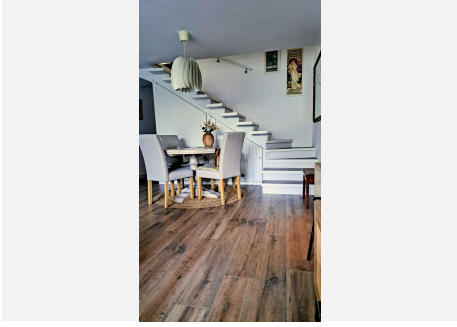
The price is open to negotiation.

Please contact us to submit an offer.



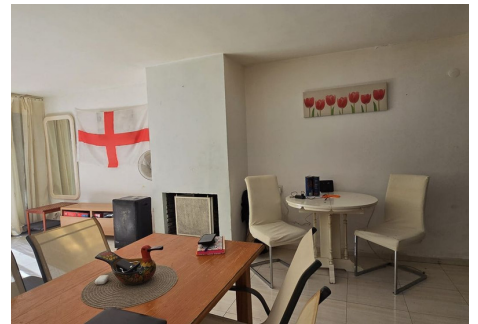
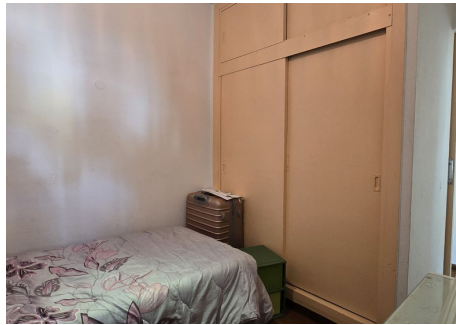
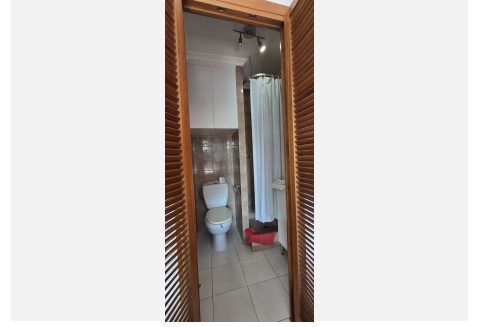
# BROMLEY ESTATES

*Marbella*



# BROMLEY ESTATES

*Marbella*



# BROMLEY ESTATES

*Marbella*

