

BROMLEY ESTATES

Marbella



PENTHOUSE DUPLEX 3 BEDROOMS 2 BATHROOMS IN GUADALMINA ALTA

📍 Guadalmina Alta

REF# R5305237 €780,000

BEDS

3

BATHS

2

BUILT

167 m²

TERRACE

134 m²

Discover this one-of-a-kind luxury duplex penthouse, exquisitely designed in rare Art Deco style, located in the heart of one of Marbella's most prestigious golf courses in Guadalmina Alta. Set within an exclusive gated community of just 35 apartments, this remarkable residence offers a lifestyle of elegance, comfort, and privacy, surrounded by manicured communal gardens and a serene swimming pool.

Spanning 167 m² of built space complemented by an expansive 134 m² terrace, this penthouse boasts three beautifully appointed bedrooms, including a master suite with ensuite bathroom, and a total of two bathrooms. The interior is a true masterpiece—fully furnished with unique Art Deco pieces sourced from renowned auction houses such as Christie's and international locations like New York, London, Paris, and Milan—making this home an unparalleled showcase of global elegance and design heritage.

The layout features a grand entrance hall leading to two spacious living rooms with multiple lounging areas, a dedicated dining room, and a fully fitted kitchen. Floor-to-ceiling double-glazed windows invite in natural light and open up to spectacular views of the golf course, lush gardens, and surrounding mountains.

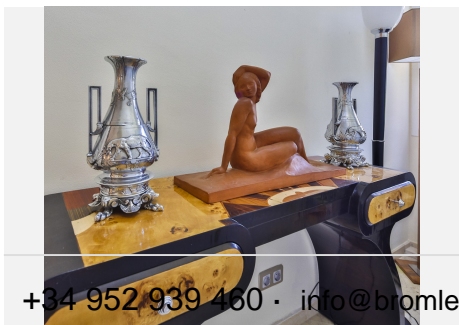
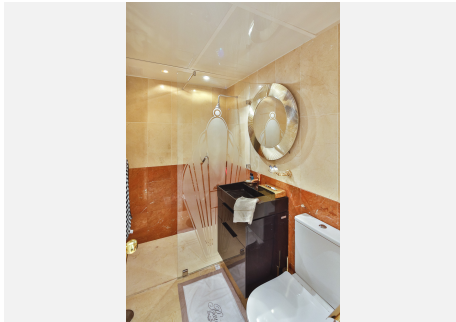
+34 952 939 460 · info@bromleyestatesmarbella.com Urbanizacion El Rosario, CN340, Km 188, Marbella, Malaga 29603

BROMLEY ESTATES

Marbella

The upper level offers a stunning private solarium complete with its own swimming pool, Jacuzzi, and a stylish outdoor living area—perfect for entertaining or relaxing while enjoying panoramic views. Additional features include marble floors, fitted wardrobes, air conditioning, lift access, satellite TV, Wi-Fi, and a private underground garage.

Residents enjoy the benefits of 24-hour security service, a secure entry, and close proximity to top amenities including the beach, port, golf, shops, restaurants, schools, and public transport. Whether as a permanent residence or a sophisticated holiday retreat, this penthouse is a rare gem on the Andalusian coast—where timeless Art Deco design meets modern Mediterranean living.



BROMLEY ESTATES

Marbella

